

APP CRS  
**058°**

Rwy Idg  
TDZE  
**773**

Apt Elev  
**799**

**RNAV (RNP) Z RWY 6L**  
CLEVELAND-HOPKINS INTL (CLE)

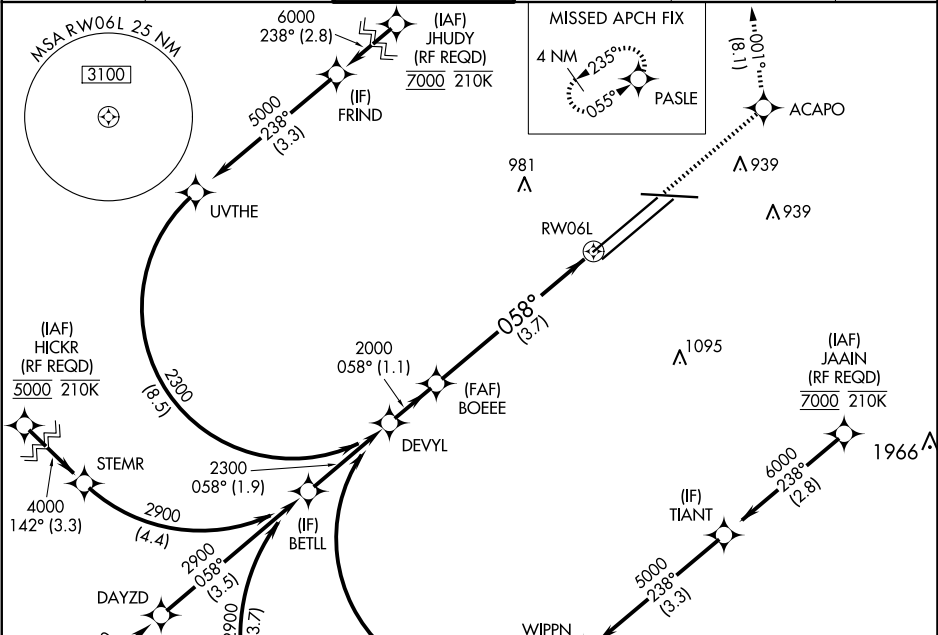
RNP AR APCH.

For uncompensated Baro-VNAV systems, procedure NA below -18°C (0°F) or above 54°C (130°F). For inop ALS, increase RNP 0.17 all Cats visibility to RVR 5500 and RNP 0.30 all Cats visibility to RVR 6000.

ALSF-2

MISSED APPROACH: Climb to 3000 direct ACAPO and on track 001° to PASLE and hold.

D-ATIS ARR <b>127.85</b> DEP <b>132.375</b>	CLEVELAND APP CON <b>126.55 346.325</b>	CLEVELAND TOWER <b>124.5 273.45</b>	GND CON <b>121.7 273.45</b>	CLNC DEL <b>125.05 273.45</b>	CPDLC
---	--	--	--------------------------------	----------------------------------	-------



ELEV 799 TDZE 773

VGSI and RNAV glidepath not coincident (VGSI Angle 3.00/TCH 69).

GP 3.00° TCH 55

DEVYL

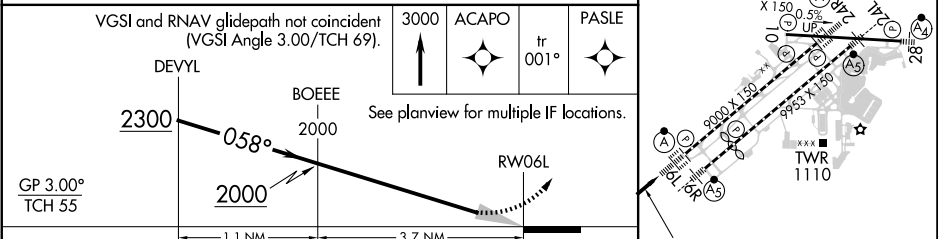
BOEEE

See planview for multiple IF locations.

RW06L

1.1 NM

3.7 NM



CATEGORY	A	B	C	D
RNP 0.17 DA		1123/30	350 (400-5%)	
RNP 0.30 DA		1176/40	403 (400-3/4)	

**AUTHORIZATION REQUIRED**

EC-2, 07 AUG 2025 to 04 SEP 2025

EC-2, 07 AUG 2025 to 04 SEP 2025