

CLEVELAND, OHIO

AL-84 (FAA)

24305

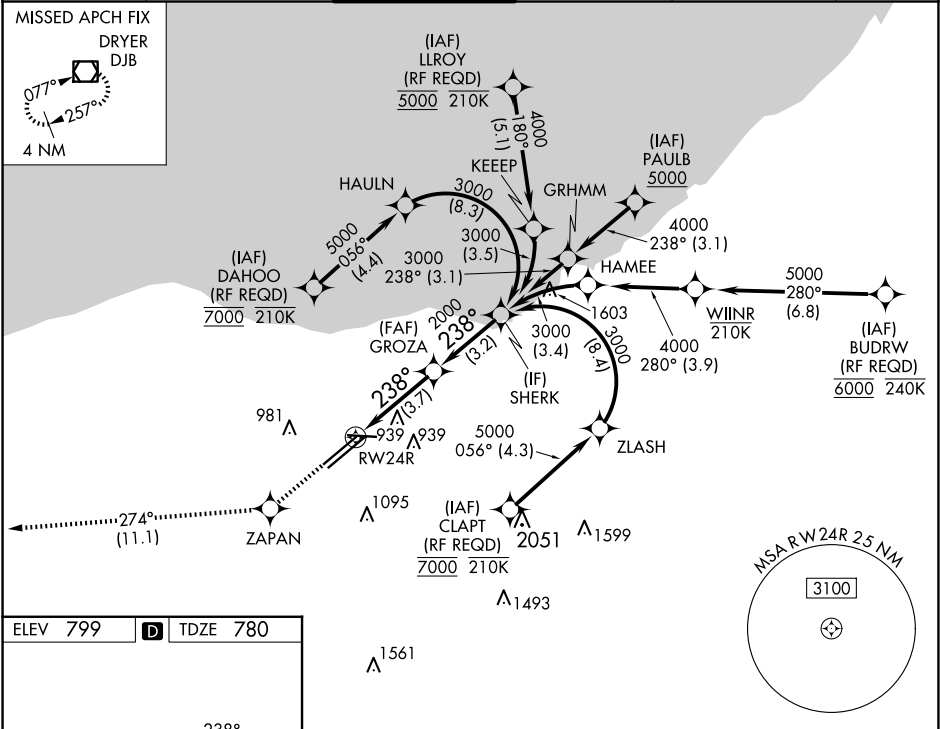
APP CRS	Rwy Idg	9000
238°	TDZE	780
	Apt Elev	799

RNAV (RNP) Z RWY 24R

CLEVELAND-HOPKINS INTL (CLE)

RNP AR APCH.	ALSF-2	MISSED APPROACH: Climb to 3000 direct ZAPAN and on track 274° to DJB VOR/DME and hold.
▼ For uncompensated Baro-VNAV systems, procedure NA below -18°C (0°F) or above 54°C (130°F). For inop ALS, increase RNP 0.13 all Cats visibility to RVR 4500.		

D-ATIS ARR 127.85 DEP 132.375	CLEVELAND APP CON 126.55 346.325	CLEVELAND TOWER 124.5 273.45	GND CON 121.7 273.45	CLNC DEL 125.05 273.45	CPDLC
-------------------------------------	-------------------------------------	---------------------------------	-------------------------	---------------------------	-------



ELEV 799	D	TDZE 780
REIL Rwy 10 TDZ/CL Rwy 6L, 6R, 24L and 24R HRL Rwy 6R-24L, and 6L-24R, 10-28		
VGSI and RNAV glidepath not coincident (VGSI Angle 3.00/TCH 65).		
SHERK		
GROZA		
RW24R		
GP 3.00° TCH 55		
3.7 NM		
3.2 NM		
CATEGORY	A	B
RNP 0.13 DA	1064/24	284 (300-1/2)
RNP 0.30 DA	1176/35	396 (400-5/8)
C		
D		

AUTHORIZATION REQUIRED

CLEVELAND, OHIO
Orig 24MAY18

41°25'N-81°51'W

CLEVELAND-HOPKINS INTL (CLE)
RNAV (RNP) Z RWY 24R

EC-2, 07 AUG 2025 to 04 SEP 2025

EC-2, 07 AUG 2025 to 04 SEP 2025