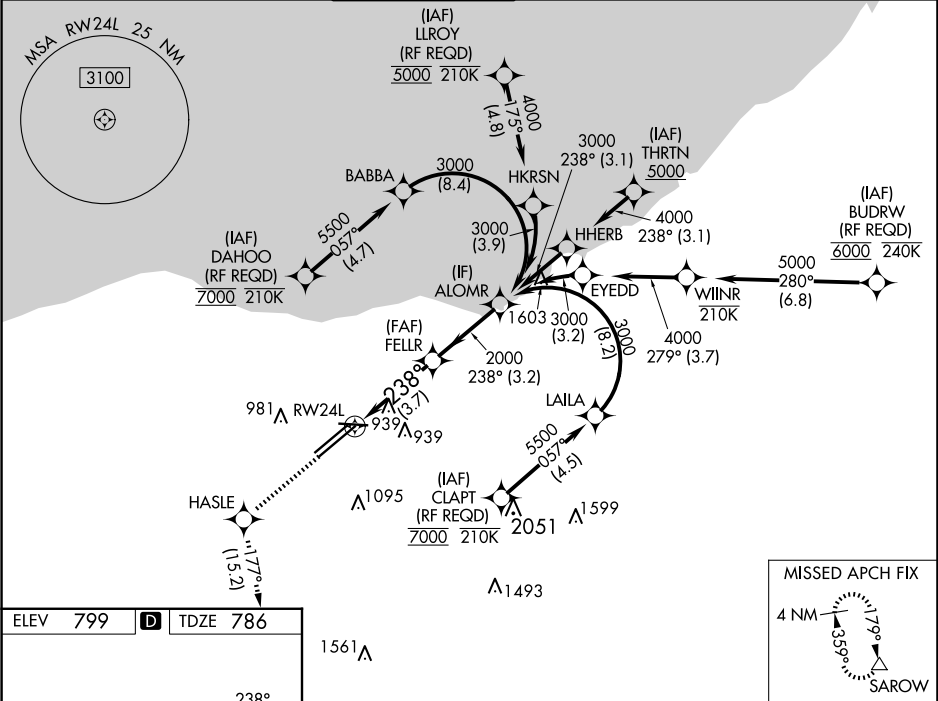


APP CRS	Rwy Idg	9953
238°	TDZE	786
	Apt Elev	799

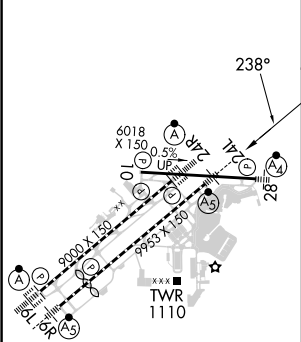
RNAV (RNP) Z RWY 24L




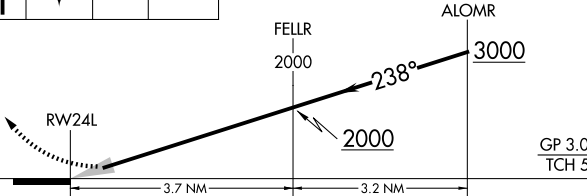
CLEVELAND-HOPKINS INTL (CLE)

RNP AR APCH.		MALSR	MISSED APPROACH: Climb to 3000 direct HASLE and on track 177° to SAROW and hold.		
▼ For uncompensated Baro-VNAV systems, procedure NA below -18°C (0°F) or above 54°C (130°F). For inop ALS, increase RNP 0.19 all Cats visibility to RVR 5500.					
D-ATIS	CLEVELAND APP CON	CLEVELAND TOWER	GND CON	CLNC DEL	CPDLC
ARR 127.85 DEP 132.375	126.55 346.325	124.5 273.45	121.7 273.45	125.05 273.45	



ELEV 799	D	TDZE 786
----------	---	----------



3000	HASLE	SAROW	VGSI and RNAV glidepath not coincident (VGSI Angle 3.00/TCH 48).	
		$\text{tr } 177^\circ$		
				
CATEGORY	A	B	C	D
RNP 0.19 DA	1140/30 354 (400- $\frac{5}{8}$ %)			
RNP 0.30 DA	1243/45 457 (500- $\frac{5}{8}$ %)			
AUTHORIZATION REQUIRED				

REIL Rwy 10
TDZ/CL Rwy 6L, 6R, 24L and 24R
HIRL Rwys 6L-24R, 6R-24L and 10-28