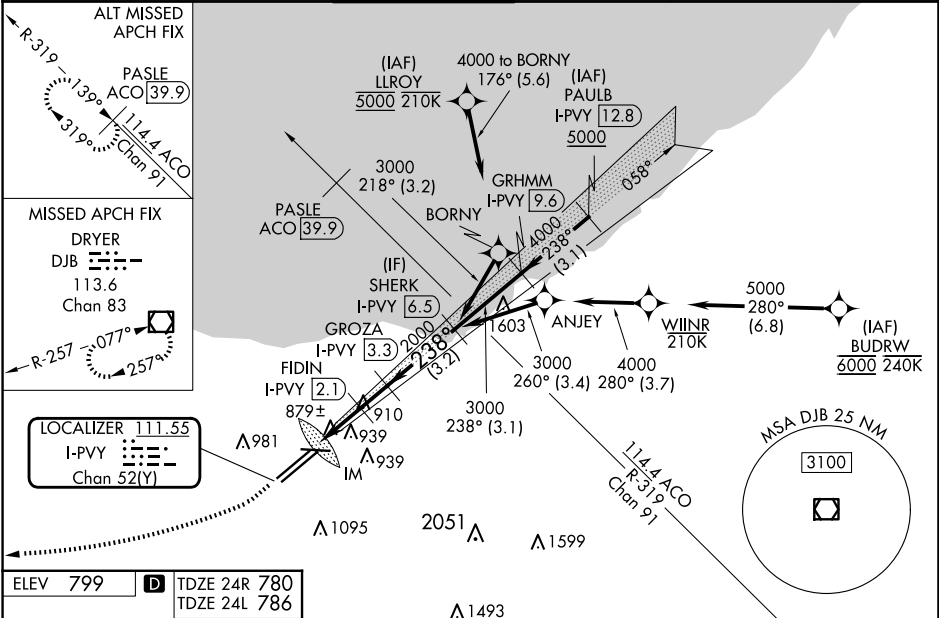


LOC/DME I-PVY 111.55 Chan 52 (Y)	APP CRS 238°	Rwy Idg 24R 24L TDZE 9000 9956 780 786 Apt Elev 799 799
--	------------------------	---

ILS or LOC RWY 24R
CLEVELAND-HOPKINS INTL (CLE)

DME required. Aircraft not DME/DME/IRU or GPS equipped - RADAR required for procedure entry. RNAV 1. From LLROY and BUDRW: RNAV 1-DME/DME/IRU or GPS required for procedure entry.	Rwy 24L MALSR 	Rwy 24R ALSF-2 	MISSED APPROACH: Climb to 1700 then climbing right turn to 3000 direct DJB VOR/DME and hold.
Circling Rwy 10 NA at night. Simultaneous approach authorized. Simultaneous operations require use of vertical guidance; maintain last assigned altitude until established on glideslope. Inop table does not apply to sidestep 24L. For inop ALS, increase S-LOC 24R Cats C/D visibility to RVR 5500.			

D-ATIS ARR 127.85 DEP 132.375	CLEVELAND APP CON 126.55 346.325	CLEVELAND TOWER 124.5 273.45	GND CON 121.7 273.45	CLNC DEL 125.05 273.45	CPDLC
---	--	--	--------------------------------	----------------------------------	-------



REIL Rwy 10
 TDZ/CL Rwy 6L, 6R, 24L and 24R
 HIRL Rwy 6L-24R, 6R-24L and 10-28

			VGSI and ILS glidepath not coincident (VGSI Angle 3.00/TCH 65).			
*LOC only.						
	I-PVY <u>0.3</u>	*I-PVY <u>0.6</u>	I-PVY <u>2.1</u>	2000	238°	3000 GS 3.00° TCH 55
0.1	0.9	1.5 NM	1.2 NM	3.2 NM		
CATEGORY	A	B	C	D		
S-ILS 24R	980/18 200 (200-½)					
S-LOC 24R	1160/24 379 (400-½)		1160/35 379 (400-¾)			
SIDESTEP 24L	1280/55 494 (500-1)		1280-1½ 494 (500-1½)			1280-2 494 (500-2)
CIRCLING	1420-1 621 (700-1)		1420-1¾ 621 (700-1¾)			1420-2 621 (700-2)