

LOC/DME	I-CLE	APP CRS	Rwy Idg	8029
111.9		058°	TDZE	777
Chan 56			Apt Elev	799

ILS RWY 6R (SA CAT II)

CLEVELAND-HOPKINS INTL (CLE)

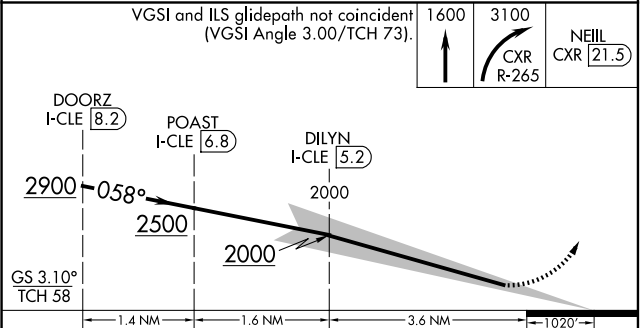
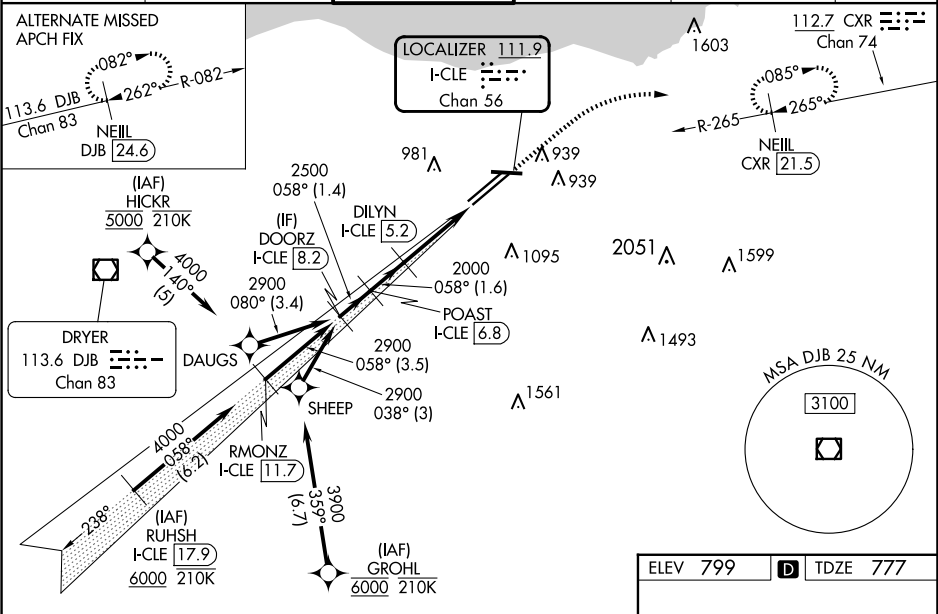
From GROHL, HICKR, and RUHSH: RNAV 1-DME/DME/IRU or GPS required for procedure entry. Aircraft not DME/DME/IRU or GPS equipped - RADAR required for procedure entry. RNAV 1.

Simultaneous approach authorized. Simultaneous operations require use of vertical guidance; maintain last assigned altitude until established on glideslope. Reduced lighting: Requires specific OPSPEC, MSPEC, or LOA approval and use of autoland or HUD to touchdown.

MALS

MISSED APPROACH: Climb to 1600 then climbing right turn to 3100 on CXR VOR/DME R-265 to NEILL/CXR 21.5 DME and hold.

D-ATIS	CLEVELAND APP CON	CLEVELAND TOWER	GND CON	CLNC DEL	CPDLC
ARR 127.85 DEP 132.375	126.55 346.325	124.5 273.45	121.7 273.45	125.05 273.45	



CATEGORY	A	B	C	D
S-ILS 6R	RA 100/12 100 DA 877			
SA CATEGORY II ILS - SPECIAL AIRCREW & AIRCRAFT CERTIFICATION REQUIRED				

