

CLEVELAND, OHIO

AL-84 (FAA)

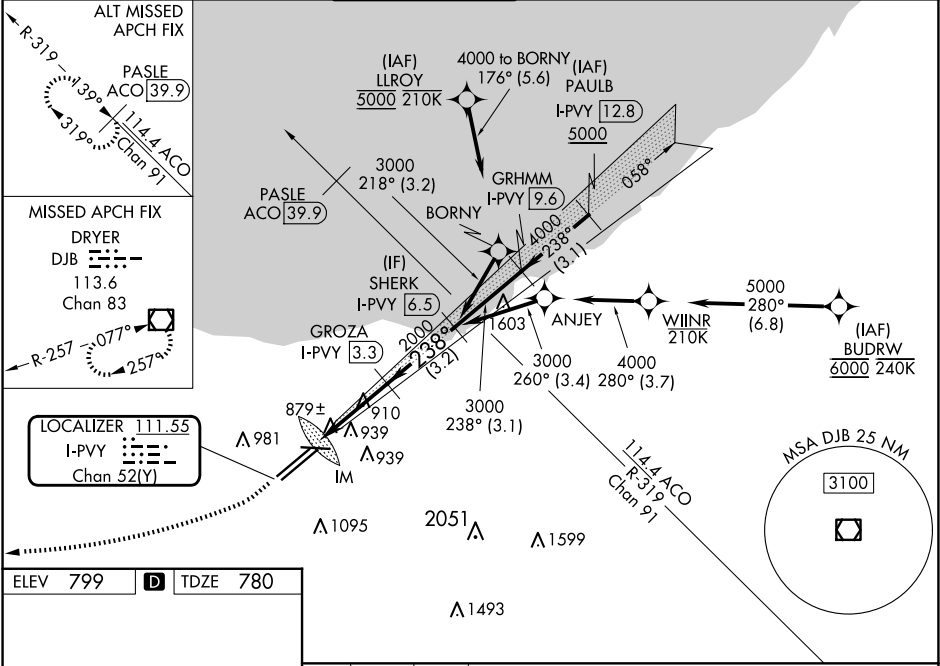
24305

LOC/DME I-PVY	APP CRS	Rwy Idg	9000
111.55	238°	TDZE	780
Chan 52 (Y)		Apt Elev	799

ILS RWY 24R (CAT II & III)
CLEVELAND-HOPKINS INTL (CLE)

DME required. Aircraft not DME/DME/IRU or GPS equipped - RADAR required for procedure entry. RNAV 1. From LLROY and BUDRW: RNAV 1-DME/DME/IRU or GPS required for procedure entry.	ALSIF-2	MISSED APPROACH: Climb to 1700 then climbing right turn to 3000 direct DJB VOR/DME and hold.
▼ CAT II: RVR 1000 authorized with specific OPSPEC, MSPEC, or LOA approval and use of autoland or HUD to touchdown. Simultaneous approach authorized. Simultaneous operations require use of vertical guidance; maintain last assigned altitude until established on glideslope.		

D-ATIS	CLEVELAND APP CON	CLEVELAND TOWER	GND CON	CLNC DEL	CPDLC
ARR 127.85 DEP 132.375	126.55 346.325	124.5 273.45	121.7 273.45	125.05 273.45	



ELEV 799	D	TDZE 780
REIL Rwy 10 TDZ/CL Rwy 6L, 6R, 24L and 24R HRL Rws 6L-24R, 6R-24L and 10-28		
CATEGORY A B C D		
S-ILS 24R CAT II RA 100/12 100 DA 880		
S-ILS 24R CAT III RVR 06		
CATEGORY II & III ILS - SPECIAL AIRCREW & AIRCRAFT CERTIFICATION REQUIRED		

CLEVELAND, OHIO
Amdt 7A 27JAN22

41°25'N-81°51'W

CLEVELAND-HOPKINS INTL (CLE)
ILS RWY 24R (CAT II & III)

EC-2, 07 AUG 2025 to 04 SEP 2025

EC-2, 07 AUG 2025 to 04 SEP 2025