
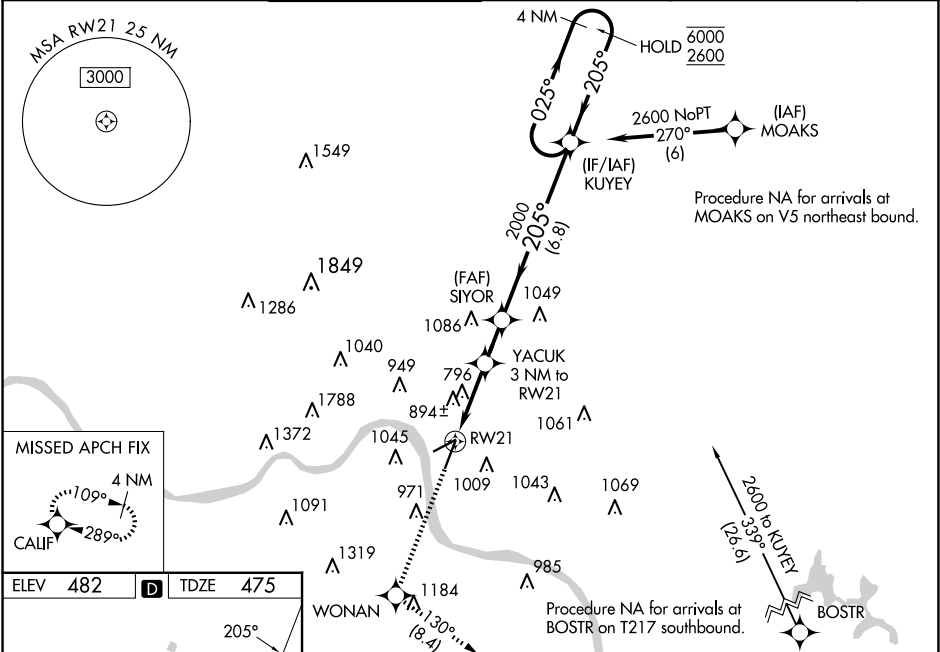


WAAS CH 90148 W21A	APP CRS 205°	Rwy Ldg TDZE 475 Apt Elev 482
--	------------------------	---

RNAV (GPS) RWY 21
CINCINNATI MUNI/LUNKEN FLD (LUK)

RNP APCH - GPS.					<div>MALSR</div> <div></div>	<div>MISSED APPROACH:</div> <div>Climb to 2500 direct WONAN and on track 130° to CALIF and hold.</div>
<div><div><div>▼</div><div>▲</div></div><div>Circling NA for Cat D north of Rwy 7-25. Circling Rwy 7 NA at night. For uncompensated Baro-VNAV systems, LNAV/VNAV NA below -15°C or above 54°C. Rwy 21 helicopter visibility reduction below RVR 4000 NA. Inop table does not apply to LPV all Cats and LNAV Cat A and B visibility. For inop ALS, increase LNAV/VNAV all Cats and LNAV Cat C and D visibility to 1½ SM.</div></div>						
<div>ATIS</div> <div>123.6</div>	<div>CINCINNATI APP CON</div> <div>121.0 254.25</div>	<div>LUNKEN TOWER ★</div> <div>118.7 (CTAF) 0 257.8</div>	<div>GND CON</div> <div>121.9</div>	<div>CLNC DEL</div> <div>121.9</div>	<div>CLNC DEL</div> <div>124.9</div> <div>(When twr closed)</div>	<div>UNICOM</div> <div>122.95</div>



ELEV 482	D	TDZE 475
REIL Rwy 3 HIRL Rwy 3-21 MIRL Rwy 7-25		
CATEGORY	A	B C D
LPV DA		797/50 322 (400-1)
LNAV/VNAV DA		1160-1½ 685 (700-1½)
LNAV MDA	1160/50 685 (700-1)	1160-1½ 685 (700-1½)
CIRCLING	1260-1 778 (800-1)	1360-1¼ 878 (900-1¼) 1360-2½ 878 (900-2½) 1420-3 938 (1000-3)

EC-2, 07 AUG 2025 to 04 SEP 2025

EC-2, 07 AUG 2025 to 04 SEP 2025