
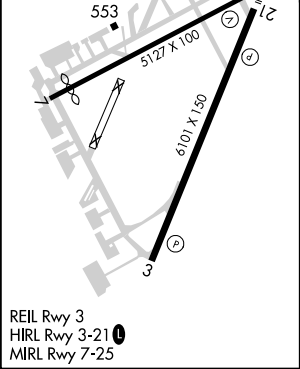
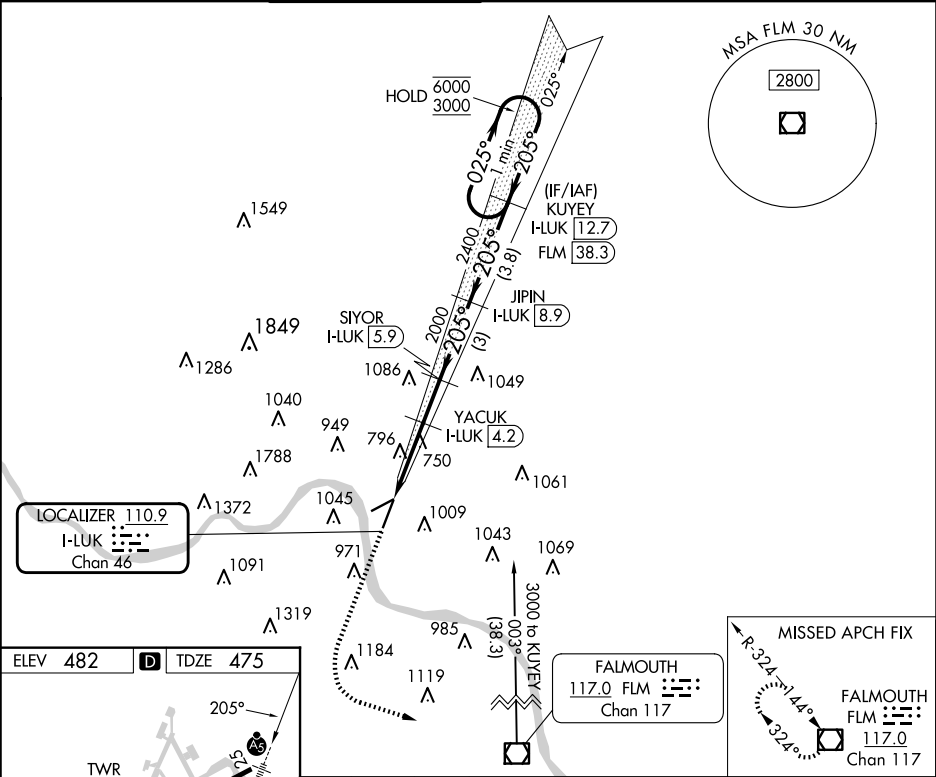





LOC/DME I-LUK	APP CRS	Rwy Idg	6101
110.9	205°	TDZE	475
Chan 46		Apt Elev	482

ILS or LOC RWY 21  
CINCINNATI MUNI/LUNKEN FLD (LUK)

DME required.					<div>MALSR</div> <div></div>	<div>MISSED APPROACH: Climb to 2000 then climbing left turn to 3000 direct FLM VOR/DME and hold.</div>	
<div><div><div><div><div></div><div></div></div><div><div></div><div></div></div></div><div><div></div><div></div></div></div></div>	<div>Rwy 21 helicopter visibility reduction below RVR 4000 NA. Circling Rwy 7 NA at night. Circling NA for Cat D north of Rwy 7-25. Inop table does not apply to S-ILS 21 all Cats and S-LOC 21 Cats A and B.</div>						
<div>ATIS</div> <div>123.6</div>	<div>CINCINNATI APP CON</div> <div>121.0 254.25</div>		<div>LUNKEN TOWER ★</div> <div>118.7 (CTAF) 0 257.8</div>	<div>GND CON</div> <div>121.9</div>	<div>CLNC DEL</div> <div>121.9</div>	<div>CLNC DEL</div> <div>124.9</div> <div>(When twr closed)</div>	<div>UNICOM</div> <div>122.95</div>



2000		3000		FLM	
					
SIYOR I-LUK 5.9		JIPIN I-LUK 8.9		KUYEY I-LUK 12.7	
YACUK I-LUK 4.2		One Minute Holding Pattern			
I-LUK 1.2		I-LUK 2.9		I-LUK 4.2	
1460		2000		2400	
1.7 NM		1.3 NM		1.7 NM	
3 NM		3.8 NM			
CATEGORY		A		B	
S-ILS 21		797/50		322 (400-1)	
S-LOC 21		1060/50		585 (600-1)	
CIRCLING		1260-1		1360-1¼	
		778 (800-1)		878 (900-1¼)	