

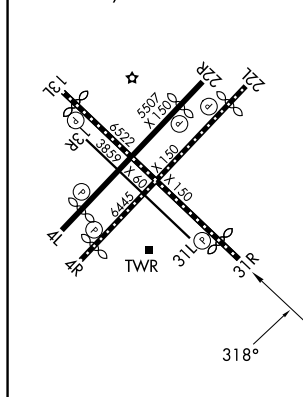
25163

RNAV (GPS) Z RWY 31R  
CHICAGO MIDWAY INTL (MDW)

**T** For uncompensated Baro-VNAV systems, LNAV/VNAV NA below -20°C or above 54°C.  
**A** Rwy 31R helicopter visibility reduction below RVR 4000 NA.

**MISSED APPROACH:** Climb to 1100 then climbing left turn to 2600 direct EON VORTAC and hold.

REIL Rwys 4R, 22L and 31R  
RLLS Rwys 13L and 31R  
HIRL Rwys 4R-22L and 13L-31R  
MIRL Rwys 4L-22R and 13R-31L



1100 ↑	2600 ↖	EON 	VGS1 and RNAV glidepath not coincident (VGS1 Angle 3.00/TCH 63).			
CATEGORY	A		B	C	D	
LPV DA	863/40		250 (300-¾)			
RNAV/ VNAV DA	953/50		340 (400-1)			
RNAV MDA	1020/55	407 (400-1)	1020/60	407 (400-1¼)		
<b>C</b> CIRCLING	1120-1	500 (500-1)	1340-2 720 (800-2)	1340-2¼ 720 (800-2¼)		

CHICAGO MIDWAY INTL (MDW)  
41°47'N-87°45'W RNAV (GPS) Z RWY 31R

EC-3, 07 AUG 2025 to 04 SEP 2025