

APP CRS	Rwy Ldg	5927
047°	TDZE	619
	Apt Elev	620

RNAV (RNP) Y RWY 4R

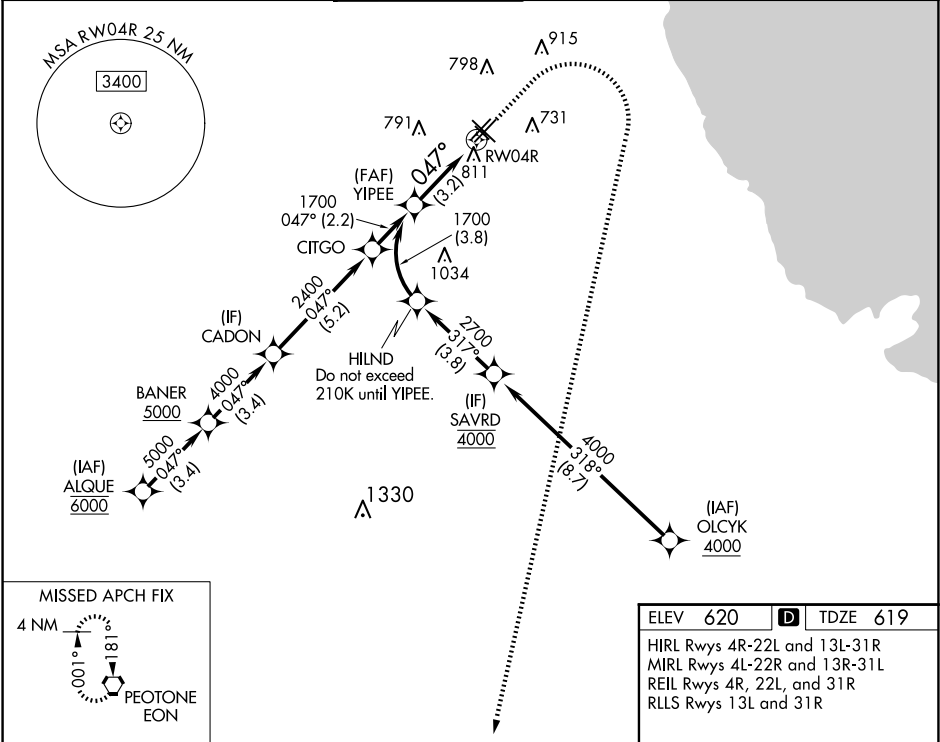
CHICAGO MIDWAY INTL (MDW)

RNP AR APCH - GPS.

For uncompensated Baro-VNAV systems, procedure NA below -20°C or above 54°C.

MISSED APPROACH: Climb to 1100 then climbing right turn to 2600 direct EON VORTAC and hold.

D-ATIS 132.75	CHICAGO APP CON 128.2 353.875	MIDWAY TOWER 135.2 269.125	GND CON 118.075	CLNC DEL 124.625	CPDLC
------------------	----------------------------------	-------------------------------	--------------------	---------------------	-------



VGSI and RNAV glidepath not coincident (VGSI Angle 3.00/TCH 66).

1100

2600

EON

YIPEE

1700

047°

RW04R

GP 3.00°

TCH 50

See planview for multiple IF locations.

CATEGORY	A	B	C	D
RNP 0.10 DA		951/50	332 (400-1)	
RNP 0.20 DA		1020/60	401 (400-1¼)	
RNP 0.30 DA		1077-1⅜	458 (500-1⅝)	

AUTHORIZATION REQUIRED