

LOC/DME I-HKH	APP CRS	Rwy Ldg	5927
111.5	047°	TDZE	619
Chan 52		Apt Elev	620

ILS or LOC RWY 4R

CHICAGO MIDWAY INTL (MDW)

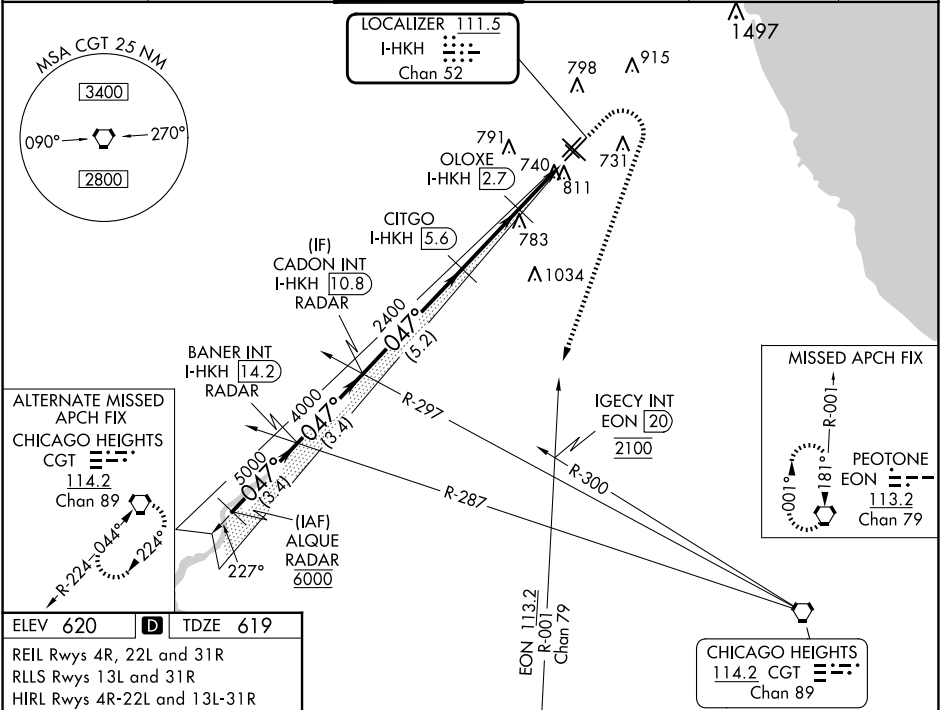
DME required for LOC only.
RNP APCH - GPS or RADAR required for procedure entry.

MISSED APPROACH: Climb to 1100 then climbing right turn to 2100 on heading 230° and on EON VORTAC R-001 until crossing IGEY INT/EON 20 DME then climb to 2600 to EON VORTAC and hold.

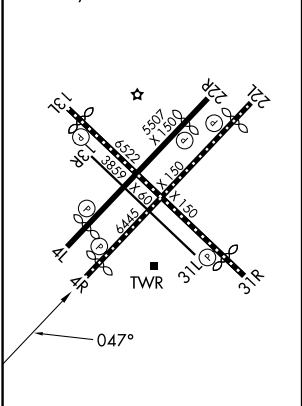
▼

Rwy 4R helicopter visibility reduction below RVR 4000 NA.

D-ATIS	CHICAGO APP CON	MIDWAY TOWER	GND CON	CLNC DEL	CPDLC
132.75	128.2 353.875	135.2 269.125	118.075	124.625	



ELEV 620	TDZE 619
REIL Rwy 4R, 22L and 31R	
RLS Rwy 13L and 31R	
HIRL Rwy 4R-22L and 13L-31R	
MIRL Rwy 4L-22R and 13R-31L	



VGSI and ILS glidepath not coincident (VGSI Angle 3.00/TCH 66).		1100	2100	IGEY INT	2600	EON
ALQUE RADAR		↑	hdg 230°	↑	↑	↑
BANER INT I-HKH 14.2 CADON INT I-HKH 10.8		↑	EON R-001	↑	↑	↑
RADAR		↑	↑	↑	↑	↑
CITGO I-HKH 5.6 OLOXE I-HKH 2.7 I-HKH 1.2 I-HKH 0.2		↑	↑	↑	↑	↑
RADAR		↑	↑	↑	↑	↑
GS 3.00° TCH 50		↑	↑	↑	↑	↑
3.4 NM		3.4 NM	5.2 NM	2.9 NM	1.5 NM	1 NM
CATEGORY	A	B	C	D		
S-ILS 4R	869/40	250 (300-¾)	869/50	250 (300-1)		
S-LOC 4R	1000/55	381 (400-1)	1000/60	381 (400-1¼)		
CIRCLING	1120-1	500 (500-1)	1340-2 720 (800-2)	1340-2¼ 720 (800-2¼)		

EC-3, 07 AUG 2025 to 04 SEP 2025

EC-3, 07 AUG 2025 to 04 SEP 2025