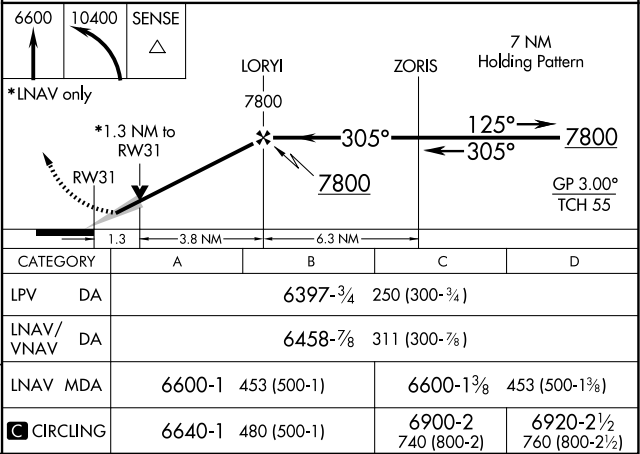
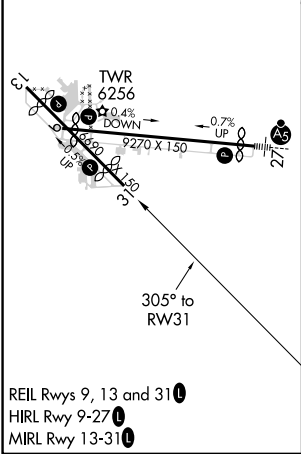
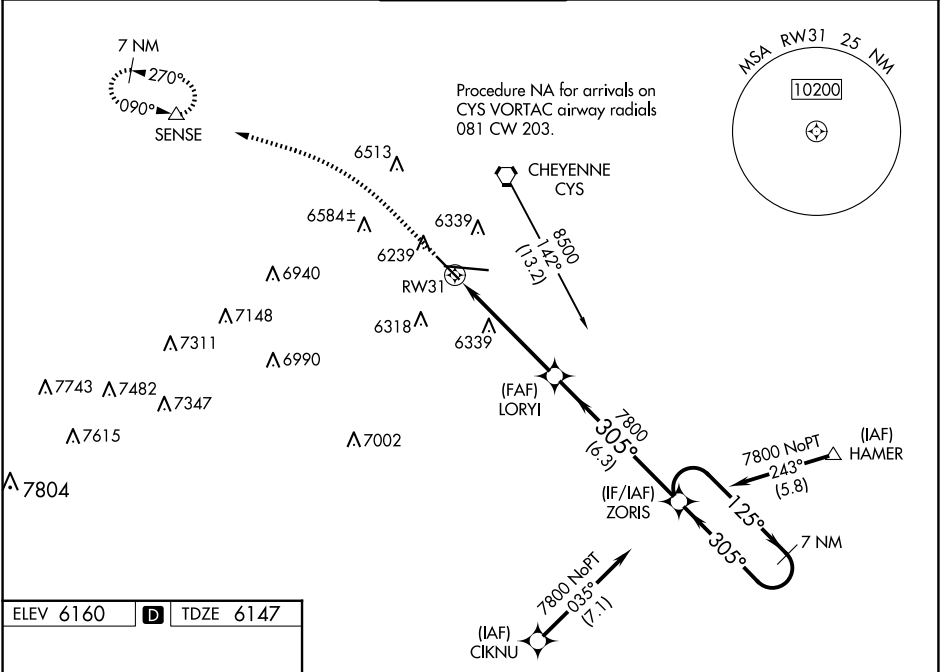


WAAS CH <b>99609</b> <b>W31A</b>	APP CRS <b>305°</b>	Rwy Idg TDZE <b>6147</b> Apt Elev <b>6160</b>
--	------------------------	---

RNAV (GPS) RWY 31

CHEYENNE RGNL/JERRY OLSON FLD (CYS)

RNP APCH. <div><div>T</div><div>A</div></div> For uncompensated Baro-VNAV systems, LNAV/VNAV NA below -24°C or above 45°C. ASR/PAR		MISSED APPROACH: Climb to 6600, then climbing left turn to 10400 direct SENSE and hold, continue climb-in-hold to 10400.		
ATIS <b>134.425 278.3</b>	CHEYENNE APP CON★ <b>124.55 263.075</b>	CHEYENNE TOWER★ <b>118.7(CTAF) 257.8</b>	GND CON <b>121.9 254.275</b>	UNICOM <b>122.95</b>



NW-1, 07 AUG 2025 to 04 SEP 2025

NW-1, 07 AUG 2025 to 04 SEP 2025