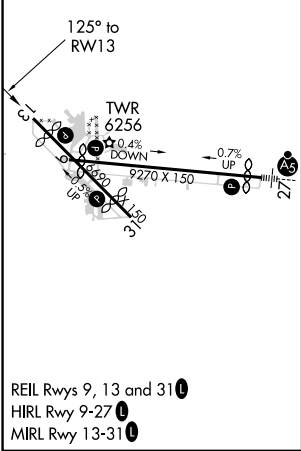
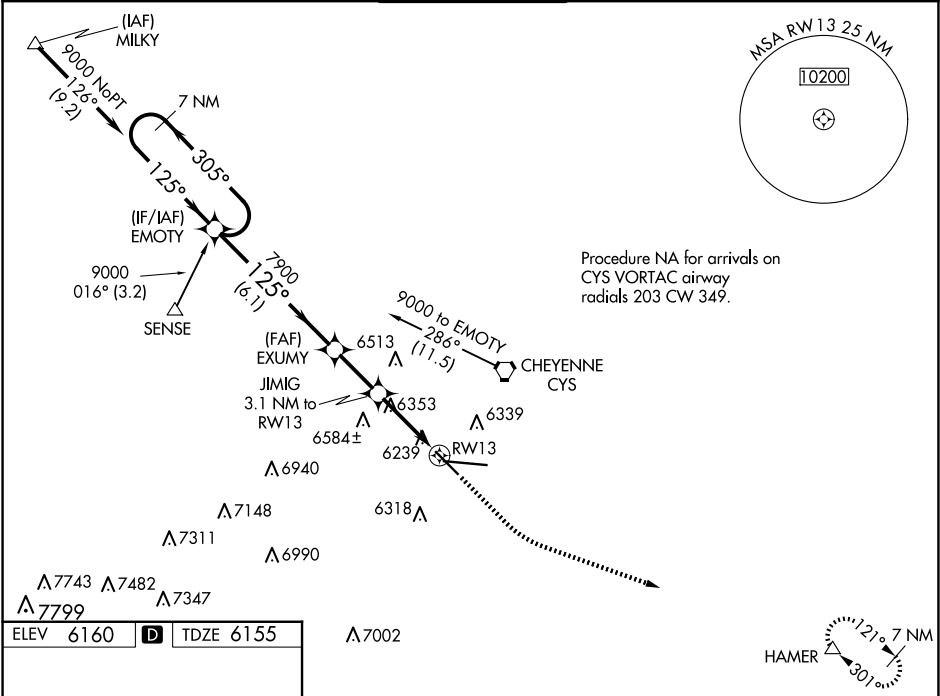


WAAS CH <b>56609</b> <b>W13A</b>	APP CRS <b>125°</b>	Rwy Idg TDZE Apt Elev	<b>4830</b> <b>6155</b> <b>6160</b>
--	------------------------	-----------------------------	---

RNAV (GPS) RWY 13  
CHEYENNE RGNL/JERRY OLSON FLD (CYS)

RNP APCH.	For uncompensated Baro-VNAV systems, LNAV/VNAV NA below -24°C or above 45°C. Rwy 13 helicopter visibility reduction below ¾ SM NA.	MISSED APPROACH: Climb to 6600, then climbing left turn to 8500 direct HAMER and hold.
ASR/PAR		

ATIS <b>134.425 278.3</b>	CHEYENNE APP CON★ <b>124.55 263.075</b>	CHEYENNE TOWER★ <b>118.7 (CTAF) 0 257.8</b>	GND CON <b>121.9 254.275</b>	UNICOM <b>122.95</b>
------------------------------	--	--	---------------------------------	-------------------------



7 NM Holding Pattern	EMOTY	EXUMY	JIMIG	3.1 NM to RWY 13	*1.3 NM to RWY 13	RWY 13
9000	305°	125°	7900	*7180		
GP 3.00°	TCH 55					
6.1 NM	2.2 NM	1.8	1.3			
CATEGORY	A	B	C	D		
LPV DA	6405-¾	250 (300-¾)				
LNAV/VNAV DA	6419-⅞	264 (300-⅞)				
LNAV MDA	6620-1	465 (500-1)	6620-1⅓	465 (500-1⅓)		
CIRCLING	6640-1	480 (500-1)	6900-2	740 (800-2)	6920-2½	760 (800-2½)