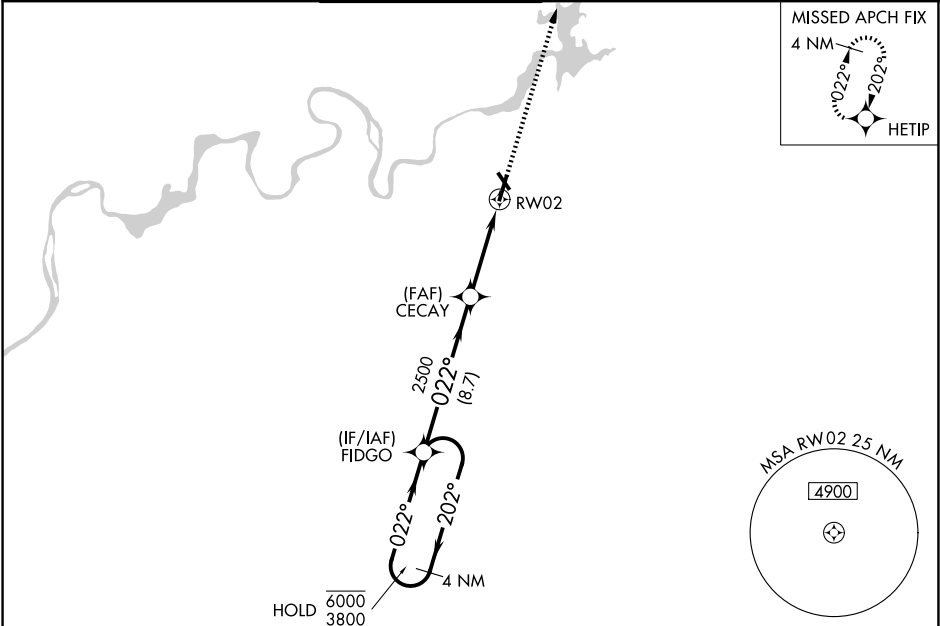


WAAS CH <b>65605</b> <b>W02A</b>	APP CRS <b>022°</b>	Rwy Ldg TDZE <b>683</b> Apt Elev <b>683</b>
--	------------------------	---

RNAV (GPS) RWY 2

LOVELL FLD (CHA)

RNP APCH - GPS. ⚠ Circling Rwy 15, 33 NA at night. For uncompensated Baro-VNAV systems, LNAV/VNAV NA below -16°C or above 54°C. For inop ALS, increase LNAV/VNAV all Cats visibility to 1½ SM. **RVR 1800 authorized with use of FD or AP or HUD to DA.			MALS R ⚠	MISSED APPROACH: Climb to 3900 direct HETIP and hold, continue climb-in-hold to 3900.	
ATIS <b>119.85</b>	CHATTANOOGA APP CON ★ <b>125.1 379.1</b>	CHATTANOOGA TOWER ★ <b>118.3 (CTAF) 0 257.8</b>	GND CON <b>121.7 348.6</b>	CLNC DEL <b>120.95 348.6</b>	UNICOM <b>122.95</b>



4 NM Holding Pattern		VGSI and RNAV glidepath not coincident (VGSI Angle 3.00/TCH 71).		3900	HETIP
6000 ← 202° 3800 → 022°		FIDGO		CECAV	2500
GP 3.00° TCH 51		2500		1.5 NM to RWY 02	RWY 02
		8.7 NM		3.9 NM	1.5 NM
CATEGORY	A	B	C	D	
LPV DA**		883/24	200 (200-½)		
LNAV/VNAV DA		1197/55	514 (600-1)		
LNAV MDA	1240/24	557 (600-½)	1240/60	557 (600-1¼)	
CIRCLING	1300-1 617 (700-1)	1340-1 657 (700-1)	1500-2½ 817 (900-2½)	1580-3 897 (900-3)	

ELEV 683

TDZE 683

MIRL Rwy 15-33  
HIRL Rwy 2-20  
TDZ/CL Rwy 20