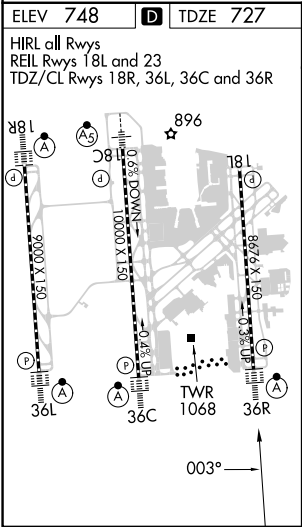
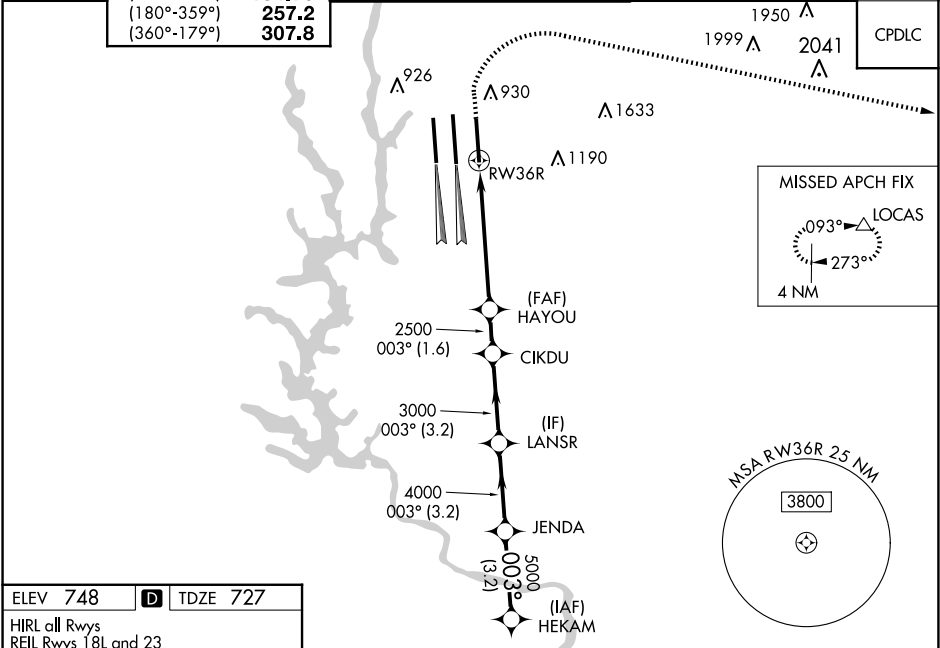


WAAS CH 90100 W36D	APP CRS 003°	Rwy Idg TDZE 727 Apt Elev 748
--	------------------------	---

RNAV (GPS) Y RWY 36R

CHARLOTTE/DOUGLAS INTL (CLT)

RNP APCH.				<div>ALSF-2</div> <div><div><div></div></div><div><div></div></div></div>	MISSED APPROACH: Climb to 1320 then climbing right turn to 4000 direct LOCAS and hold.	
<div><div><div></div><div></div></div><div>Circling NA at night. For uncompensated Baro-VNAV systems, LNAV/VNAV NA below -11°C or above 54°C. Simultaneous approach authorized. Use of FD or AP required during simultaneous operations. LNAV procedure NA during simultaneous operations. For inop ALSF, increase LNAV/VNAV all Cats visibility to 1½ mile.</div></div>						
D-ATIS	CHARLOTTE APP CON		CHARLOTTE TOWER		GND CON	CLNC DEL
ARR 121.15	(001°-119°) 128.32	(Rwys 18L-36R) 118.1 257.8	(Rwy 18C-36C) 126.4 257.8	121.8 348.6 (WEST)	127.15	
DEP 132.1	(120°-295°) 120.05	(Rwy 18R-36L) 133.35 257.8		121.9 348.6 (EAST)	348.6	
	(296°-360°) 134.75					



1320	4000	LOCAS	VGSI and RNAV glidepath not coincident (VGSI Angle 3.00/TCH 74).		HEKAM
*LNAV only.		JENDA		LANSR	HEKAM
RW36R		HAYOU		CIKDU	HEKAM
1.6		3.8		1.6	3.2
CATEGORY		A		B	
LPV DA		927/18		200 (200-½)	
LNAV/VNAV DA		1229-1¼		502 (500-1¼)	
LNAV MDA		1320/24		593 (600-½)	
C CIRCLING		1380-1		632 (700-1)	
		1500-2¼		752 (800-2¼)	
		1500-2½		752 (800-2½)	