

WAAS CH <b>56515</b> <b>W36A</b>	APP CRS <b>003°</b>	Rwy Idg <b>9000</b> TDZE <b>744</b> Apt Elev <b>748</b>
--	------------------------	---

## RNAV (GPS) Y RWY 36L


CHARLOTTE/DOUGLAS INTL (CLT)

RADAR required for procedure entry. RNP APCH.

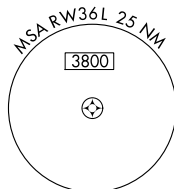
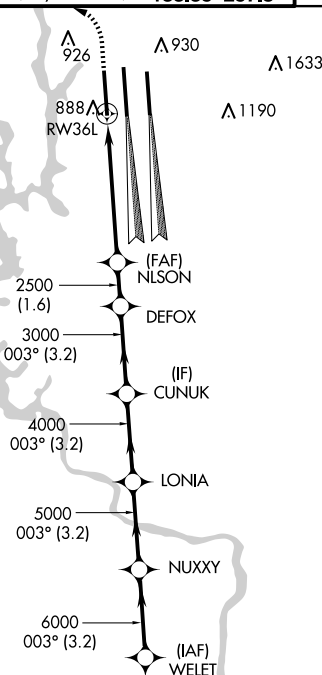
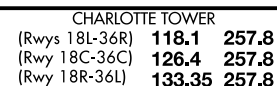
**T** Circling NA at night. Simultaneous approach authorized. LNAV procedure NA during simultaneous operations. Use of FD or AP required during simultaneous operations. For inop ALS, increase LNAV/VNAV all Cats visibility to RVR 4500 and increase LNAV Cats C/D visibility to RVR 6000. For uncompensated Baro-VNAV systems, LNAV/VNAV NA below -10°C or above 54°C.

ALSF-2

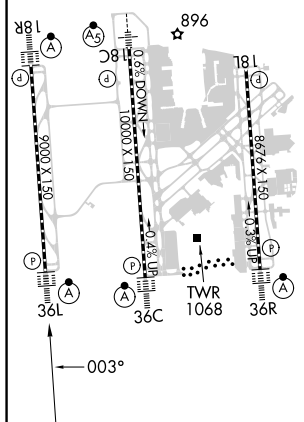
**MISSED APPROACH:** Climb to 1200 then climbing left turn to 4000 direct BUDKE and hold.

D-ATIS	CHARLOTTE APP CON	CHARLOTTE TOWER	GND CON	CLNC DEL
ARR <b>121.15</b>	(001°-119°) <b>128.32</b>	(Rwys 18L-36R) <b>118.1 257.8</b>	<b>121.8 348.6</b> (WEST)	<b>127.15</b>
DEP <b>132.1</b>	(120°-295°) <b>120.05</b>	(Rwy 18C-36C) <b>126.4 257.8</b>	<b>121.9 348.6</b> (EAST)	<b>348.6</b>
	(296°-360°) <b>134.75</b>	(Rwy 18R-36L) <b>133.35 257.8</b>		
	(180°-359°) <b>257.2</b>			
	(360°-179°) <b>307.8</b>		2041 	CPDLC

MISSED APCH FIX



ELEV 748	<b>D</b>	TDZE 744
HIRL all Rwy's		
REIL Rwy's 18L and 23		
TDZ/CL Rwy's 18R, 36L, 36C and 36R		



<div style="display: flex; justify-content: space-between;"> <span>1200 ↑</span> <span>4000 </span> <span>BUDKE </span> </div> <p>VGSI and RNAV glidepath not coincident (VGSI Angle 3.00/TCH 70).</p>					
CATEGORY	A	B	C	D	
LPV DA		944/18    200 (200-½)			
LNAV/ VNAV	DA	1049/24    305 (400-½)			
LNAV MDA	1140/24    396 (400-½)		1140/35	396 (400-¾)	
<b>C</b> CIRCLING	1380-1    632 (700-1)		1500-2¼ 752 (800-2¼)	1500-2½ 752 (800-2½)	