

CHARLOTTE, NORTH CAROLINA

AL-78 (FAA)

25051

WAAS CH <b>86200</b> <b>W36B</b>	APP CRS <b>003°</b>	Rwy Idg <b>10000</b> TDZE <b>707</b> Apt Elev <b>748</b>
----------------------------------------	------------------------	----------------------------------------------------------------

## RNAV (GPS) Y RWY 36C

CHARLOTTE/DOUGLAS INTL (CLT)

RNP APCH.

**T** Circling NA at night. Simultaneous approach authorized. Use of FD or AP required during simultaneous operations. For uncompensated Baro-VNAV systems, LNAV/VNAV NA below -11°C or above 54°C. LNAV procedure NA during simultaneous operations.

ALSF-2



**MISSED APPROACH:**  
Climb to 3000 direct  
TOMME and hold.

D-ATIS	CHARLOTTE APP CON	CHARLOTTE TOWER		GND CON	CINC DEL
ARR <b>121.15</b>	(001°-119°) <b>128.32</b>	(Rwys 18L-36R) <b>118.1</b>	<b>257.8</b>	<b>121.8 348.6</b> (WEST)	<b>127.15</b>
DEP <b>132.1</b>	(120°-295°) <b>120.05</b>	(Rwy 18C-36C) <b>126.4</b>	<b>257.8</b>	<b>121.9 348.6</b> (EAST)	<b>348.6</b>
	(296°-360°) <b>134.75</b>	(Rwy 18R-36L) <b>133.35</b>	<b>257.8</b>		

Λ  
1847

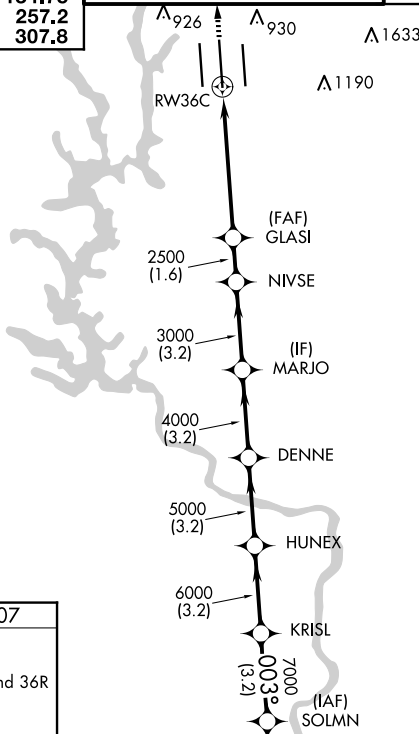
CHARLOTTE APP CON	
(001°-119°)	<b>128.32</b>
(120°-295°)	<b>120.05</b>
(296°-360°)	<b>134.75</b>
(180°-359°)	<b>257.2</b>
(360°-179°)	<b>307.8</b>

CHARLOTTE TOWER		
(Rwys 18L-36R)	<b>118.1</b>	<b>257.8</b>
(Rwy 18C-36C)	<b>126.4</b>	<b>257.8</b>
(Rwy 18R-36L)	<b>133.35</b>	<b>257.8</b>

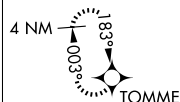
	GND CON
121.8	348.6 (WEST)
121.9	348.6 (EAST)

CLNC DEL	
<b>127.15</b>	
<b>348.6</b>	

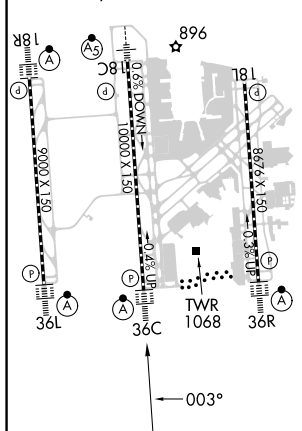
CPDLC



MISSED APCH FIX



ELEV 748	<b>D</b>	TDZE 707
HIRL all Rwys		
REIL Rwys 18L and 23		
TDZ/CL Rwys 18R, 36L, 36C and 36R		



CHARLOTTE, NORTH CAROLINA  
Amdt 3F 02JAN20

35°13'N-80°57'W

CHARLOTTE/DOUGLAS INTL (CLT)

RNAV (GPS) Y RWY 36C

SE-2, 07 AUG 2025 to 04 SEP 2025

SE-2, 07 AUG 2025 to 04 SEP 2025