

WAAS CH 82415 W18D	APP CRS 183°	Rwy Idg TDZE 744 Apt Elev 748
--	------------------------	---

RNAV (GPS) Y RWY 18R

CHARLOTTE/DOUGLAS INTL (CLT)

RNP APCH

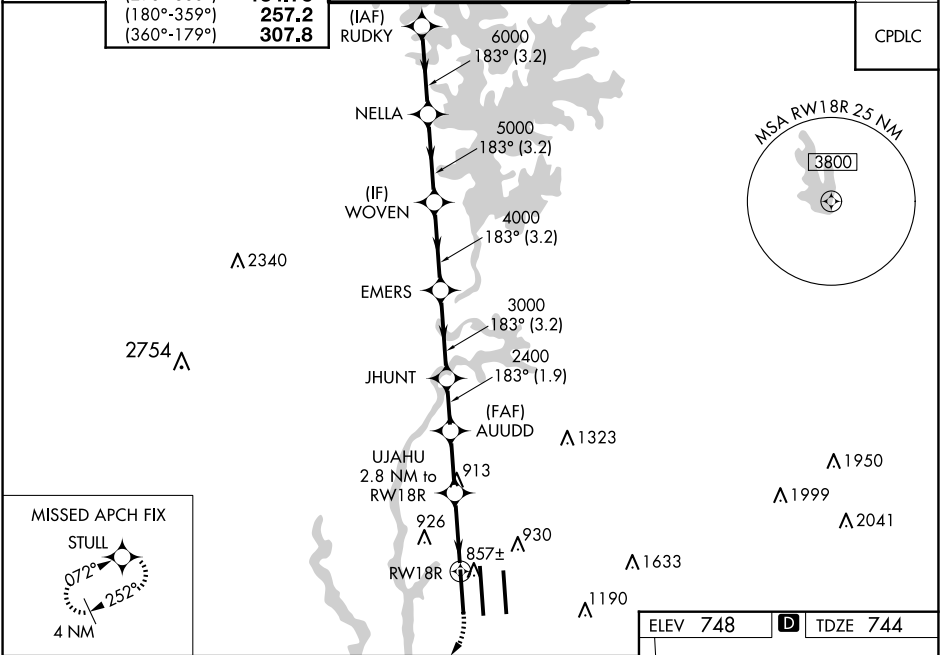
⚠

Circling NA at night. Simultaneous approach authorized. LNAV procedure NA during simultaneous operations. Use of FD or AP providing RNAV track guidance required during simultaneous operations. For uncompensated Baro-VNAV systems, LNAV/VNAV NA below -11°C or above 54°C. For inop ALS, increase LNAV/VNAV all Cats visibility to RVR 4500. For inop ALS, increase LNAV Cat C/D visibility to RVR 5500.

ALSF-2

MISSED APPROACH: Climb to 1200 then climbing right turn to 4000 direct STULL and hold, continue climb-in-hold to 4000.

D-ATIS ARR 121.15 DEP 132.1	CHARLOTTE APP CON (001°-119°) 128.32 (120°-295°) 120.05 (296°-360°) 134.75 (180°-359°) 257.2 (360°-179°) 307.8	CHARLOTTE TOWER (Rwys 18L-36R) 118.1 257.8 (Rwy 18C-36C) 126.4 257.8 (Rwy 18R-36L) 133.35 257.8	GND CON 121.8 348.6 (WEST) 121.9 348.6 (EAST)	CLNC DEL 127.15 348.6
---	--	---	---	---------------------------------



RUDKY		NELLA		WOVEN		EMERS		JHUNT		AUUDD		UJAHU		*LNAV only.	
7000		183°		6000		5000		4000		3000		2400		2.8 NM to RW18R	
GP 3.00°										1.9 NM		2.2 NM		1.8 NM	
TCH 55												1 NM		RW18R	
		3.2 NM		3.2 NM		3.2 NM		3.2 NM		1.9 NM		2.2 NM		1.8 NM	
		A		B		C		D							
LPV DA				944/18		200 (200-½)									
LNAV/VNAV DA				1018/24		274 (300-½)									
LNAV MDA		1120/24		376 (400-½)		1120/40		376 (400-¾)							
CIRCLING		1380-1		632 (700-1)		1500-2¼		1500-2½							
						752 (800-2¼)		752 (800-2½)							

ELEV 748

D

TDZE 744

HIRL all Rwys

REIL Rwys 18L and 23

TDZ/CL Rwys 18R, 36L, 36C and 36R