

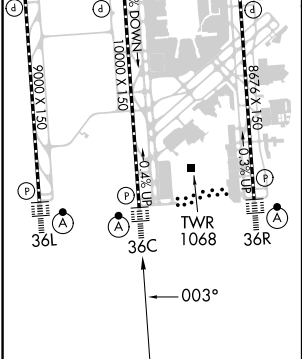
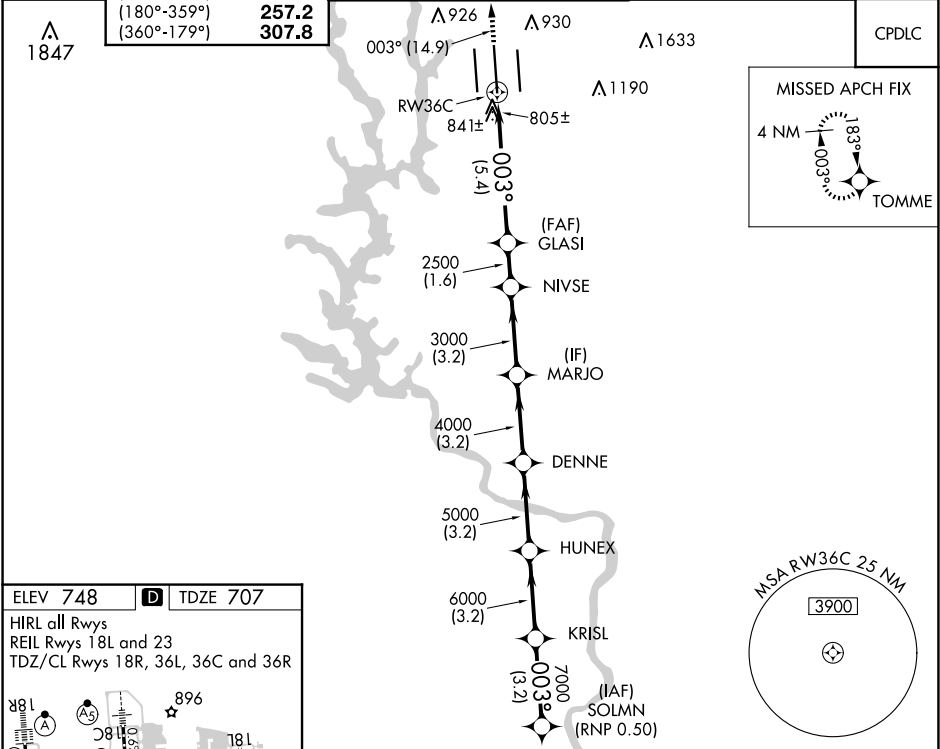
| | | |
|---------|----------|-------|
| APP CRS | Rwy Idg | 10000 |
| 003° | TDZE | 707 |
| | Apt Elev | 748 |



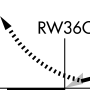
RNAV (RNP) Z RWY 36C
CHARLOTTE/DOUGLAS INTL (CLT)

RNP AR APCH - GPS.

| | | |
|---|-------------------|--|
| <div>Simultaneous approach authorized. Use of FD or AP required during simultaneous operations. For uncompensated Baro-VNAV systems, procedure NA below -8°C or above 54°C. For inop ALS, increase RNP 0.30 visibility all Cats to 1½ SM.</div> | <div>ALSF-2</div> | <div>MISSED APPROACH: Climb to 3000 on track 003° to TOMME and hold.</div> |
|---|-------------------|--|

| | | | | |
|------------|--------------------|----------------------------|--------------------|----------|
| D-ATIS | CHARLOTTE APP CON | CHARLOTTE TOWER | GND CON | CLNC DEL |
| ARR 121.15 | (001°-119°) 128.32 | (Rwys 18L-36R) 118.1 257.8 | 121.8 348.6 (WEST) | 127.15 |
| DEP 132.1 | (120°-295°) 120.05 | (Rwy 18C-36C) 126.4 257.8 | 121.9 348.6 (EAST) | 348.6 |
| | (296°-360°) 134.75 | (Rwy 18R-36L) 133.35 257.8 | | |
| | (180°-359°) 257.2 | | | |
| | (360°-179°) 307.8 | | | |



| | | | | | | | | | |
|---|---------|---|--|---------------|---------------|---------------|---------------|---------------|-----------------|
| 3000 | tr 003° | TOMME | VGSI and RNAV glidepath not coincident (VGSI Angle 3.00/TCH 72). | | | | SOLMN | | |
|  | |  | | | | | | | |
|  | | | GLASI 2500 | NIVSE 3000 | MARJO 4000 | DENNE 5000 | HUNEX 6000 | KRISL 7000 | 003° 8000 |
| | | | 5.4 NM | 1.6 NM | 3.2 NM | 3.2 NM | 3.2 NM | 3.2 NM | GP 3.05° TCH 57 |
| CATEGORY | | A | | B | | C | | D | |
| RNP 0.11 DA | | | | 1134/40 | | 427 (400-¾) | | | |
| RNP 0.30 DA | | | | 1180/50 | | 473 (500-1) | | | |
| AUTHORIZATION REQUIRED | | | | | | | | | |