

CHARLOTTE/DOUGLAS INTL (CLT)  
CHARLOTTE, NORTH CAROLINA

## KNIGHTS THREE DEPARTURE

**TOP ALTITUDE:**  
4000

RADAR and DME required.

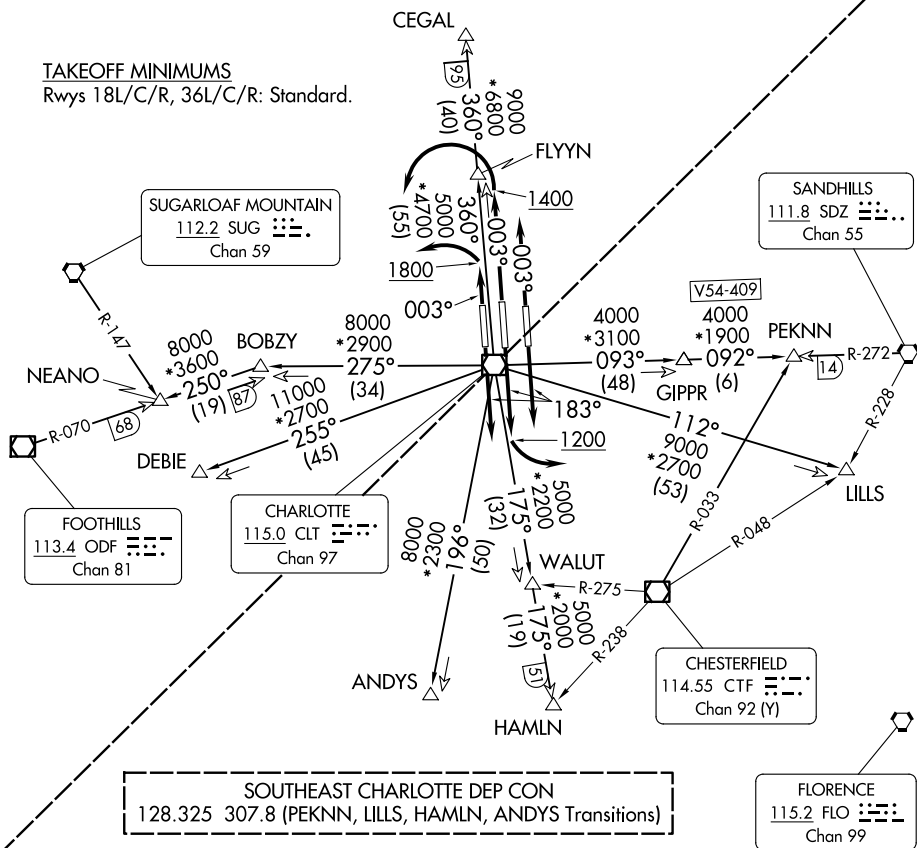
121.8 348.6 (WEST)  
121.9 348.6 (EAST)  
CHARLOTTE TOWER  
118.1 257.8 (Rwy 18L-36R)  
126.4 257.8 (Rwy 18C-36C)  
133.35 257.8 (Rwy 18R-36L)

NORTHWEST CHARLOTTE DEP CON

120.05 257.2 (DEBIE, NEANO Transitions)  
120.05 257.2 (FLYYN, CEGAL Transitions Rwy 18L/C/R)  
120.5 257.2 (FLYYN, CEGAL Transitions Rwy 36L/C/R)

## TAKEOFF MINIMUMS

Rwys 18L/C/R, 36L/C/R: Standard.



ASA CL1 25 NM

3800

NOTE: For propeller aircraft only.

NOTE: Turboprops: Operate in a manner that will result in best forward speed and climb rate.

NOTE: Transponder code will be issued via PDC or Charlotte clearance delivery.

(CONTINUED ON FOLLOWING PAGE)

NOTE: Chart not to scale.

## KNIGHTS THREE DEPARTURE

(KNI3.KNI) 21MAR24

CHARLOTTE, NORTH CAROLINA  
CHARLOTTE/DOUGLAS INTL (CLT)

SE-2, 07 AUG 2025 to 04 SEP 2025