

LOC/DME I-BQC	APP CRS	Rwy Idg	8390
108.9	003°	TDZE	727
Chan 26		Apt Elev	748

ILS or LOC RWY 36R

CHARLOTTE/DOUGLAS INTL (CLT)

<div><div><div>V</div><div>A</div></div><div>Circling NA at night. Simultaneous approach authorized. DME or RADAR required.</div></div>		<div><div>ALS-2</div><div><div><div></div><div></div></div><div><div></div><div></div></div></div></div>	<div>MISSED APPROACH: Climb to 1320 then climbing right turn to 4000 on CLT VOR/DME R-093 to LOCAS INT/24.9 DME and hold.</div>					
<div>D-ATIS</div>		<div>CHARLOTTE APP CON</div>		<div>CHARLOTTE TOWER</div>		<div>GND CON</div>		<div>CLNC DEL</div>
<div>ARR 121.15</div>		<div>(001°-119°) 128.32</div>		<div>(Rwys 18L-36R) 118.1 257.8</div>		<div>121.8 348.6 (WEST)</div>		<div>127.15</div>
<div>DEP 132.1</div>		<div>(120°-295°) 120.05</div>		<div>(Rwy 18C-36C) 126.4 257.8</div>		<div>121.9 348.6 (EAST)</div>		<div>348.6</div>
		<div>(296°-360°) 134.75</div>		<div>(Rwy 18R-36L) 133.35 257.8</div>				
		<div>(180°-359°) 257.2</div>						
		<div>(360°-179°) 307.8</div>						

LOCALIZER 108.9

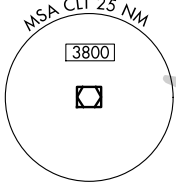
I-BQC

Chan 26

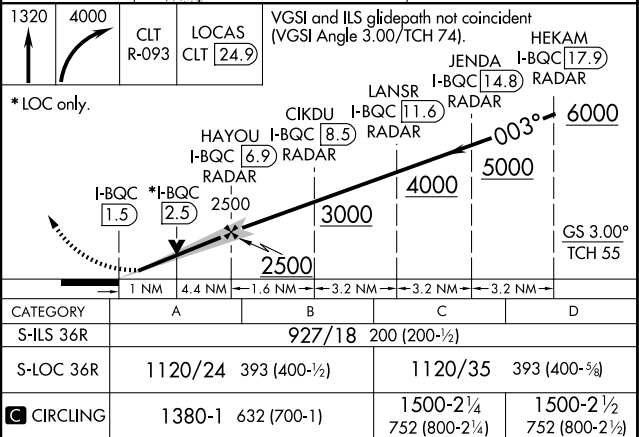
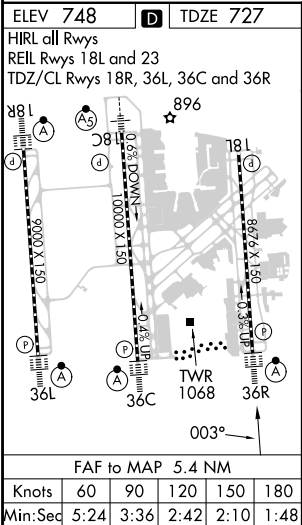
CHARLOTTE

115.0 CLT

Chan 97



RADAR REQUIRED



SE-2, 07 AUG 2025 to 04 SEP 2025

SE-2, 07 AUG 2025 to 04 SEP 2025