
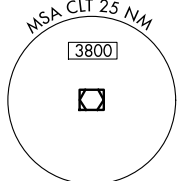
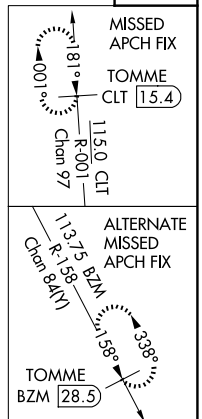


ILS or LOC RWY 36C
CHARLOTTE/DOUGLAS INTL (CLT)

MISSED APPROACH: Climb to 3000 on CLT
VOR/DME R-001 to TOMME/CLT 15.4 DME
and hold.



LOCALIZER 111.7
I-DQG 



3000 ↑ CLT R-001	TOMME CLT 15.4	VGSI and ILS glidepath not coincident (VGSI Angle 3.00°/TCH 72).				SOLMN CLT 22.2 RADAR
CATEGORY	A		B	C	D	
S-ILS 36C			907/18	200 (200-½)		
S-LOC 36C			1120/24	413 (400-½)		
C CIRCLING	1380-1 632 (700-1)		1500-2¼ 752 (800-2¼)	1500-2½ 752 (800-2½)		