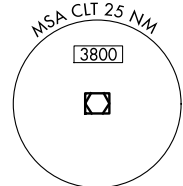
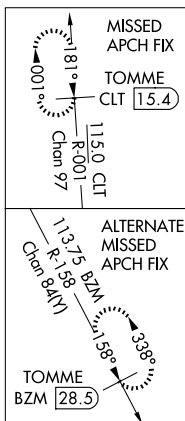
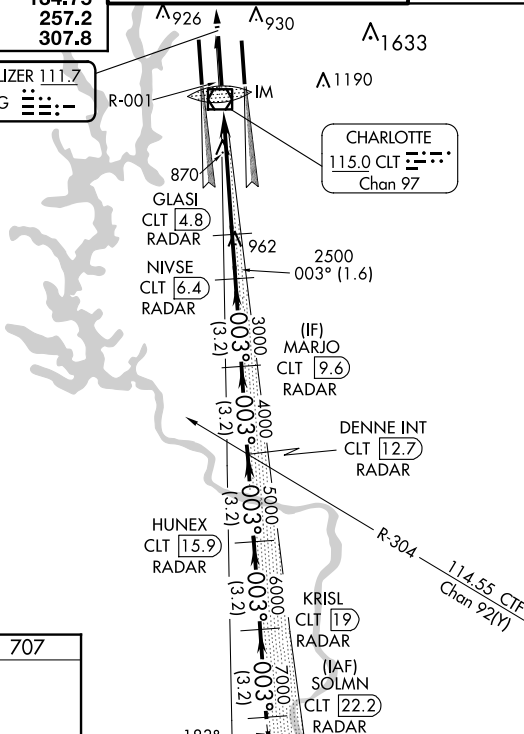


ILS RWY 36C (CAT II & III)
CHARLOTTE/DOUGLAS INTL (CLT)

MISSED APPROACH: Climb to 3000 on CLT
VOR/DME R-001 to TOMME/CLT 15.4 DME
and hold.



LOCALIZER 111.7
I-DQG $\ddot{=}\ddot{=}\ddot{=}$



The aerial photograph shows a road network with several measurement points labeled A, B, and C. Point A is located at the intersection of two roads, with labels 36L and 36R nearby. Point B is located on a road segment with labels 18R and 18L nearby. Point C is located on a road segment with labels 896 and 1068 nearby. The road segments are labeled with their respective lengths and slopes: 9000 X 1.50, 10000 X 1.50, 8676 X 1.50, and 0.35 UP. The road segments are also labeled with their respective directions: DOWN and UP.

3000 ↑ CLT R-001	TOMME CLT 15.4		VGSi and ILS glidepath not coincident (VGSi Angle 3.00°/TCH 72).					SOLMN CLT 22.2
GLASI CLT 4.8 RADAR		NIVSE CLT 6.4 RADAR	MARJO CLT 9.6 RADAR	DENNE INT CLT 12.7 RADAR	HUNEX CLT 15.9 RADAR	KRISL CLT 19 RADAR	003° 8000	
IM 809		2500	3000	4000	5000	6000	7000	
[96°]		5.4 NM	1.6 NM	3.2 NM	3.2 NM	3.2 NM	3.2 NM	
CATEGORY	A		B		C		D	
S-ILS 36C			CAT II		RA 126/12		100 DA 807	
S-ILS 36C			CAT III _a		RVR 07			
S-ILS 36C			CAT III _b		RVR 07			
S-ILS 36C			CAT III _c		NA			

CATEGORY II & III ILS - SPECIAL AIRCREW
& AIRCRAFT CERTIFICATION REQUIRED

HIRL all Rwy's
REIL Rwy's 18L and 23
TDZ/CL Rwy's 18R, 36L, 36C and 36R

CHARLOTTE/DOUGLAS INTL (CLT)

ILS RWY 36C (CAT II & III)