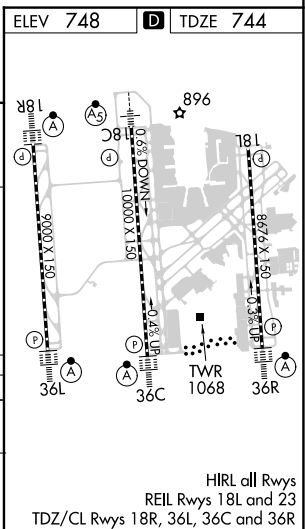
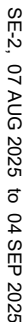


**ILS RWY 18R (SA CAT I)**  
**CHARLOTTE/DOUGLAS INTL (CLT)**

ALSF-2

**MISSED APPROACH:** Climb to 1200 then climbing right turn to 4000 on CLT VOR/DME R-250 to STULL INT/CLT 13 DME and hold, continue climb-in-hold to 4000.

CPDLC

SE-2, 07 AUG 2025 to 04 SEP 2025

CHARLOTTE/DOUGLAS INTL (CLT)  
ILS RWY 18R (SA CAT I)