

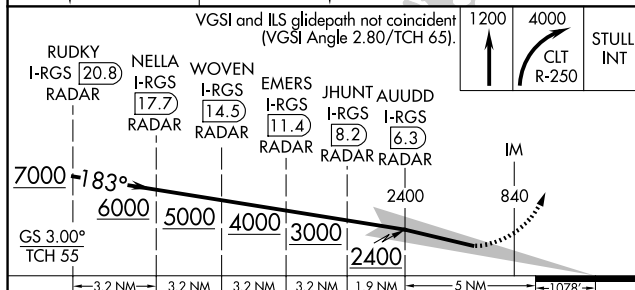
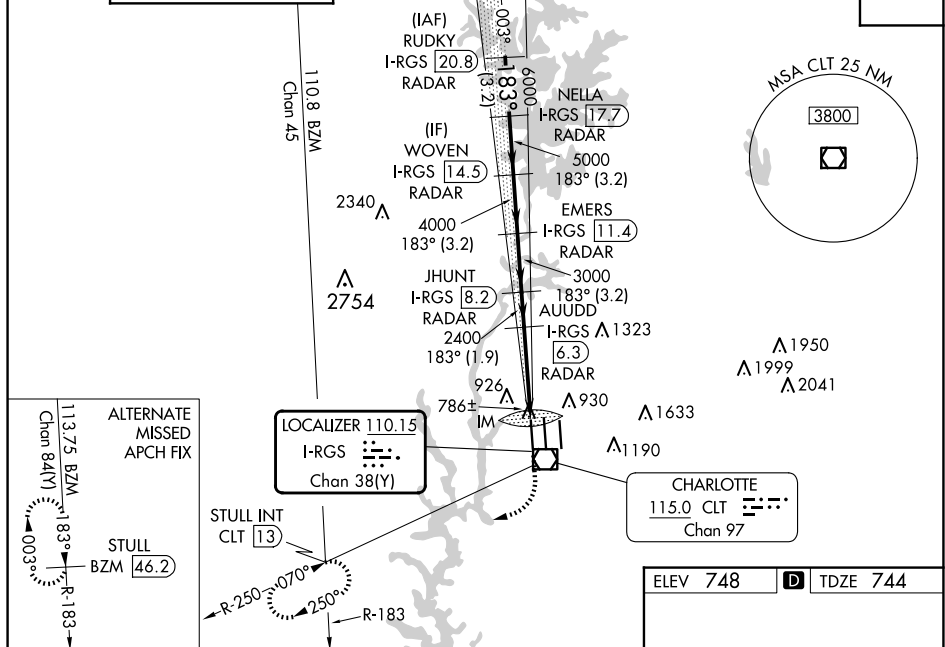
**ILS RWY 18R (CAT II & III)**  
CHARLOTTE/DOUGLAS INTL (CLT)

**MISSED APPROACH:** Climb to 1200 then climbing right turn to 4000 on CLT VOR/DME R-250 to STULL INT/CLT 13 DME and hold, continue climb-in-hold to 4000.

Simultaneous approach authorized.

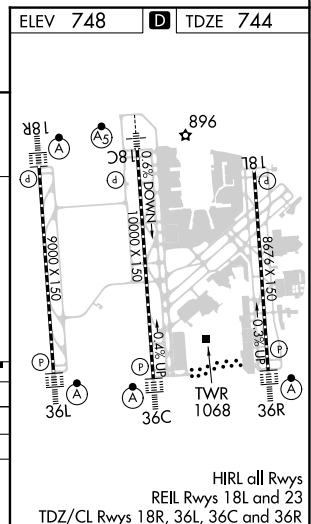


D-ATIS	CHARLOTTE APP CON	CHARLOTTE TOWER	GND CON	CLNC DEL
ARR <b>121.15</b>	(001°-119°) <b>128.32</b>	(Rwys 18L-36R) <b>118.1 257.8</b>	<b>121.8 348.6 (WEST)</b>	<b>127.15</b>
DEP <b>132.1</b>	(120°-295°) <b>120.05</b>	(Rwy 18C-36C) <b>126.4 257.8</b>	<b>121.9 348.6 (EAST)</b>	<b>348.6</b>
	(296°-360°) <b>134.75</b>	(Rwy 18R-36L) <b>133.35 257.8</b>		
	(180°-359°) <b>257.2</b>			
	(360°-179°) <b>307.8</b>			CPDLC



CATEGORY	A	B	C	D
S-ILS 18R	CAT II RA 106/12 100 DA 844			
S-ILS 18R	CAT III RVR 06			

## CATEGORY II & III ILS SPECIAL AIRCREW & AIRCRAFT CERTIFICATION REQUIRED



SE-2, 07 AUG 2025 to 04 SEP 2025