

TOP ALTITUDE:
4000

D-ATS 124.75
CLNC DEL 127.325 291.65
CPDIC
GND CON 121.9 348.6
CHARLESTON TOWER 126.0 239.0
CHARLESTON DEP CON 120.7 306.925

TAKEOFF MINIMUMS:
Rwys 15, 33: Standard.
Rwys 3, 21: Standard with minimum climb of 500' per NM to 560.

COLLIERS
IRQ

per NM to 560.

FIBRO

ALLENDALE
ALD

DUBLIN
DBN

STUNO

GULLA

GEICHE

TYLOR

BRYSE

STUNO

STUNO

STUNO

STUNO

STUNO

STUNO

STUNO

STUNO

STUNO

STUNO

STUNO

STUNO

STUNO

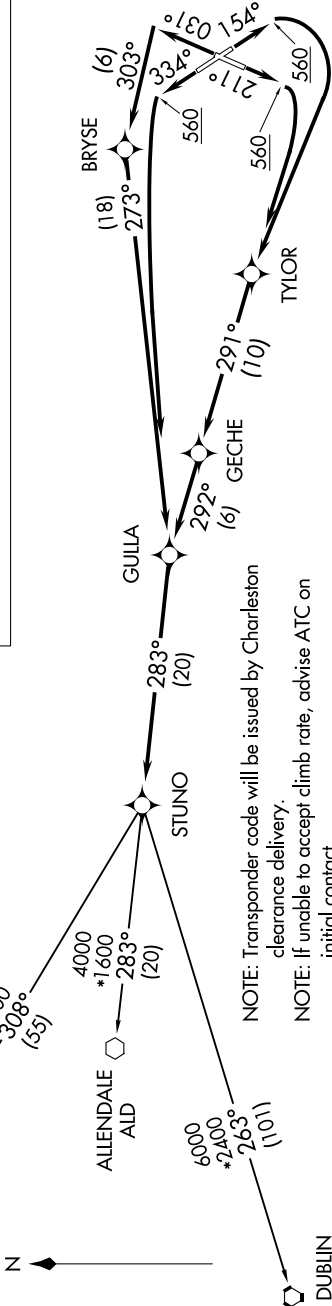
STUNO ONE DEPARTURE (RNAV)
(STUNO1.STUNO) 07OCT21

CHARLESTON, SOUTH CAROLINA
CHARLESTON AFB/INTL (CHS)

DEPARTURE ROUTE DESCRIPTION

TAKEOFF RUNWAY 3: Climb on heading 031° to intercept course 303° to BRYSE, then on depicted route to STUNO, thence
TAKEOFF RUNWAY 15: Climb on heading 154° to 560, then right turn direct TYLOR, then on depicted route to STUNO, thence
TAKEOFF RUNWAY 21: Climb on heading 211° to 560, then right turn direct TYLOR, then on depicted route to STUNO, thence
TAKEOFF RUNWAY 33: Climb on heading 334° to 560, then left turn direct GULLA, then on depicted route to STUNO, thence
. on assigned transition. Maintain 4000 expect ATC clearance to filed altitude/flight level within ten (10) minutes after departure.

ALLENDALE TRANSITION (STUNO1.ALD)
COLLIERS TRANSITION (STUNO1.IRQ)
DUBLIN TRANSITION (STUNO1.DBN)



NOTE: Chart not to scale.