

PLMTO THREE DEPARTURE (RNAV)

TOP ALTITUDE:
4000

NOTE: Chart not to scale.

DEPARTURE ROUTE DESCRIPTION

TAKEOFF RUNWAY 3: Climb on heading 031° to 560, then right turn direct LOIRN, then on depicted route to PLUMTO, thence. . . .

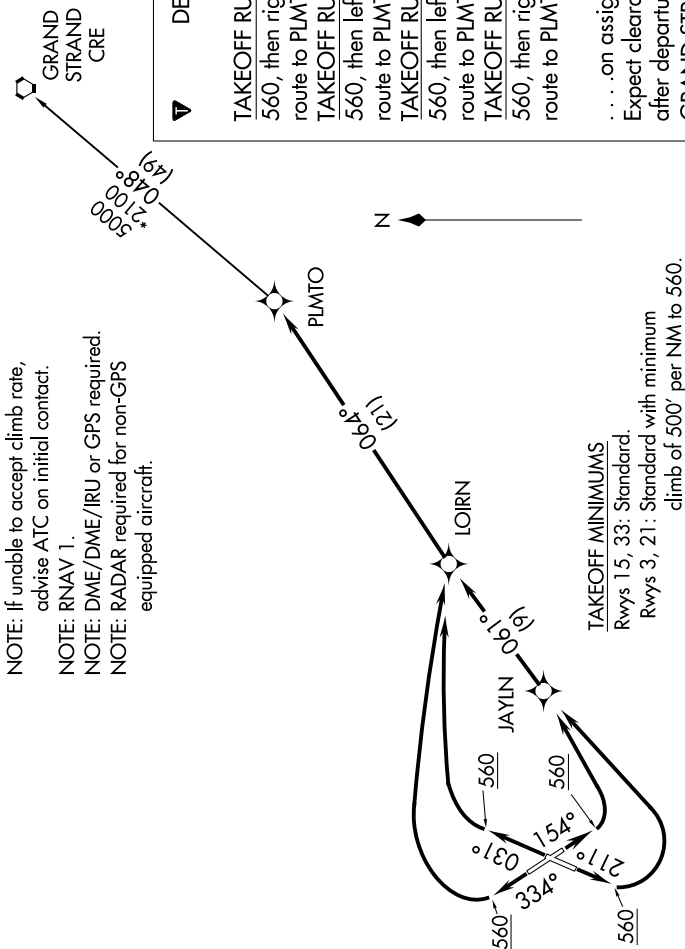
TAKEOFF RUNWAY 15: Climb on heading 154° to 560, then left turn direct JAYLN, then on depicted route to PLUMTO, thence. . . .

TAKEOFF RUNWAY 21: Climb on heading 211° to 560, then left turn direct JAYLN, then on depicted route to PLUMTO, thence. . . .

TAKEOFF RUNWAY 33: Climb on heading 334° to 560, then right turn direct LOIRN, then on depicted route to PLUMTO, thence. . . .

... on assigned transition/route. Maintain 4000. Expect clearance to filed altitude within ten minutes after departure.

GRAND STRAND TRANSITION (PLMTO3.CRE):



NOTE: If unable to accept climb rate, advise ATC on initial contact.

NOTE: RNAV 1.

NOTE: DME/DME/IRU or GPS required.

NOTE: RADAR required for non-GPS equipped aircraft.

TAKEOFF MINIMUMS
Rwys 15, 33: Standard.
Rwys 3, 21: Standard with minimum
climb of 500' per NM to

D-ATIS
124.75
CLNC DEL
127.325 291.65
CPDIC
GND CON
121.9 348.6
CHARLESTON TOWER
126.0 239.0
CHARLESTON DEP CON
121.275 379.925

PLMTO THREE DEPARTURE (RNAV)

(PLMTO3.PLMTO) 05NOV20

CHARLESTON, SOUTH CAROLINA
CHARLESTON AFB/INTL (CHS)