

HI-VOR Z or TACAN Z RWY 15

VORTAC CHS <b>113.5</b> Chan <b>82</b>	APCH CRS <b>157°</b>	Rwy Idg TDZE <b>43</b> Arpt Elev <b>46</b>	<b>9001</b>
--	-------------------------	--	-------------

[USAF]

CHARLESTON AFB/INTL (KCHS)

DME required

ALSF-2

MISSED APPROACH: Climb to 500 then climbing left turn to 3500 on CHS VORTAC R-055 to WANDO/CHS 13 DME and hold, continue climb-in-hold to 3500.

▼ \* When ALS inop, increase CAT CDE RVR to 60, vis to 1½ miles.



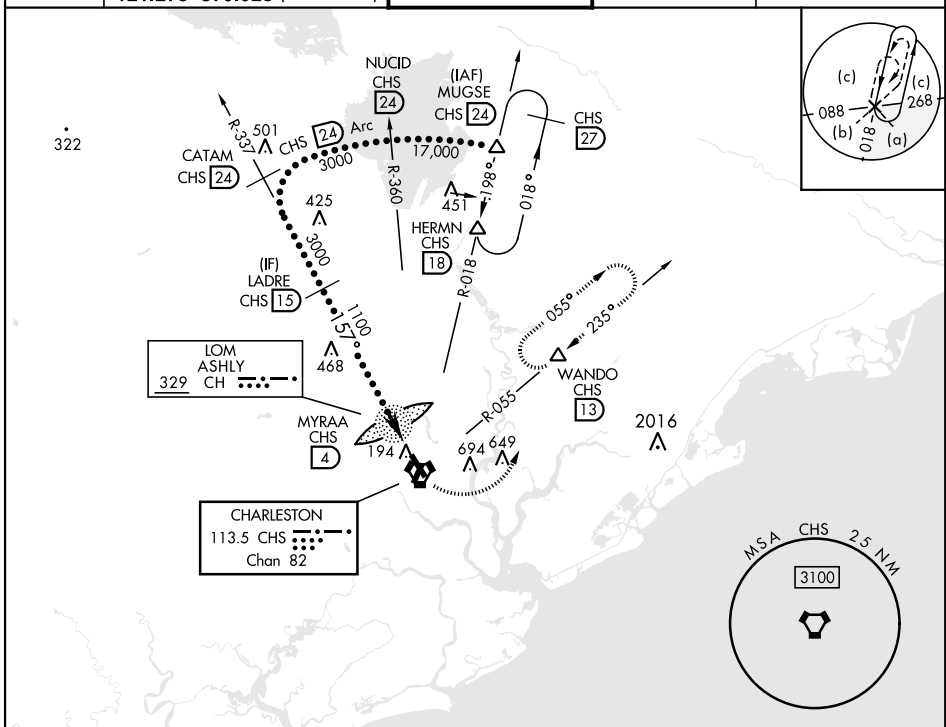
ATIS  
**124.75**

APP CON  
**120.7 306.925** (151° - 330°)  
**121.275 379.925** (331° - 150°)

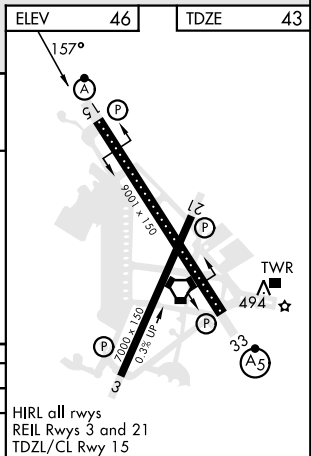
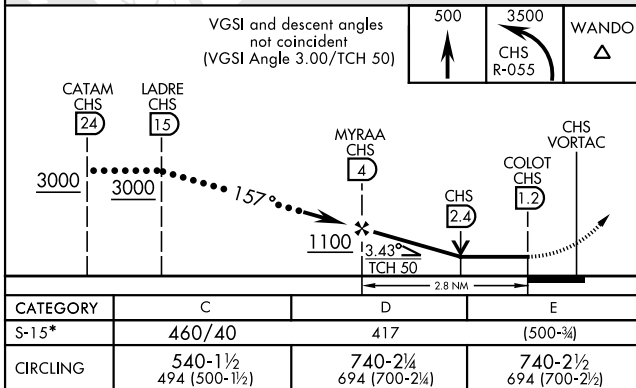
TOWER  
**126.0 239.0**

GND CON  
**121.9 348.6**

CLNC DEL  
**127.325 291.65**



EMERG SAFE ALT 100 NM 3200



HI-VOR Z or TACAN Z RWY 15