

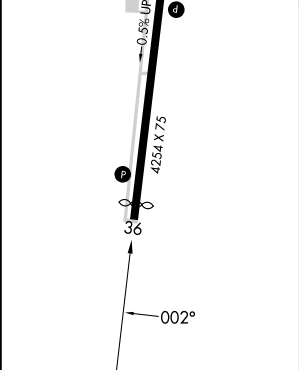
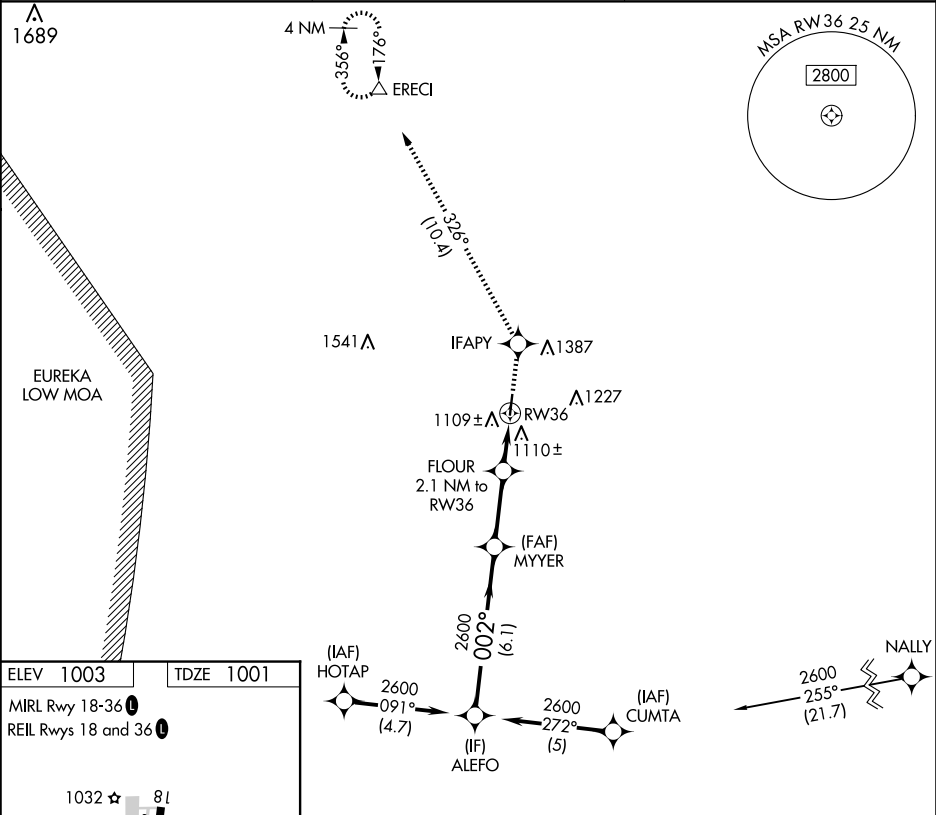
APP CRS	Rwy Idg	3985
002°	TDZE	1001
	Apt Elev	1003

RNAV (GPS) RWY 36

CHANUTE MARTIN JOHNSON (CNU)

RNP APCH - GPS.	MISSED APPROACH: Climb to 2900 direct IFAPY and on track 326° to ERECI and hold.
Procedure NA at night. Rwy 36 helicopter visibility reduction below 1 SM NA.	

ASOS 127.075	KANSAS CITY CENTER 132.9 279.5	UNICOM 122.7 (CTAF) 0
-----------------	-----------------------------------	--------------------------



VGSI and descent angles not coincident (VGSI Angle 3.00/TCH 40).			
ALEFO	MYER	2900	IFAPY
2600		tr	ERECI
002°		326°	
2600			
3.04°			
TCH 36			
1700			
FLOUR 2.1 NM to RW36			
RW36			
6.1 NM		2.7 NM	2.1 NM
CATEGORY	A	B	C
LNAV MDA	1400-1	399 (400-1)	NA
CIRCLING	1480-1	1620-1	NA
	477 (500-1)	617 (700-1)	