

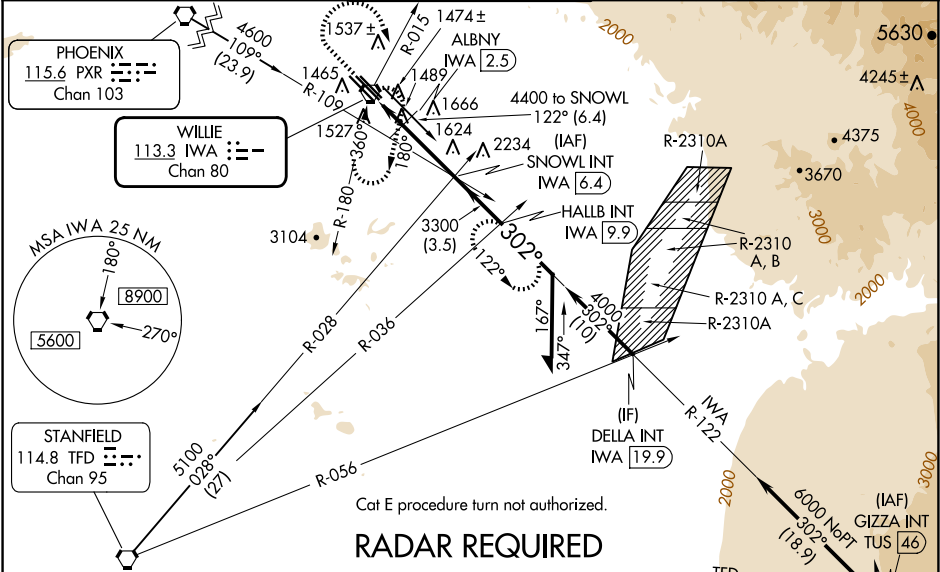
| | | | | |
|----------------------------------------------|------------------------|----------|-------------------|------------------|
| VORTAC IWA 113.3 Chan 80 | APP CRS 302° | Rwy Idg | 30C | 30R |
| | | TDZE | 10201 1380 | 9301 1382 |
| | | Apt Elev | 1384 | 1384 |
| | | | | |

VOR or TACAN RWY 30C
MESA GATEWAY (IWA)

⚠ When local altimeter setting not received, use Phoenix Sky Harbor Intl altimeter setting and increase all MDA 80 feet, increase S-30C, SIDESTEP 30R, and Circling Cats C/D/E visibility ¼ SM.

MISSED APPROACH: Climb to 2800 then climbing right turn to 5000 via heading 145° and IWA VORTAC R-015 to IWA VORTAC and hold, continue climb-in-hold to 5000 (TACAN aircraft continue via IWA VORTAC R-122 to HALLB INT/IWA 9.9 DME and hold, continue climb-in-hold to 5000, hold SE, LT, 302° inbound).

| | | | | |
|------------------------------|---------------------------------------|----------------------------------------------|--------------------------------|---------------------------|
| ATIS 133.5 270.275 | PHOENIX APP CON 124.9 353.8 | GATEWAY TOWER ★ 120.6 (CTAF) 289.4 | GND CON 128.25 275.8 | CLNC DEL 135.05 |
|------------------------------|---------------------------------------|----------------------------------------------|--------------------------------|---------------------------|



| | | | | | |
|--------------------|--------------------|----------------|----------------------|----------------------|----------------------|
| 2800 5000 | | IWA R-015 | IWA | SNOWL INT IWA 6.4 | Remain within 10 NM |
| IWA VORTAC IWA 0.6 | | ALBANY IWA 1.7 | ALBANY IWA 2.5 | ≤ 3.03° TCH 49 | |
| 1.2 NM | | 0.7 | 3.9 NM | 1940* | 3300 |
| CATEGORY | A | B | C | D | E |
| S-30C | 1940-1 560 (600-1) | | 1940-1½ 560 (600-1½) | 1940-1¾ 560 (600-1¾) | 1940-2 560 (600-2) |
| SIDESTEP 30R | 1940-1 558 (600-1) | | 1940-1½ 558 (600-1½) | 1940-2 558 (600-2) | |
| CIRCLING | 1940-1 556 (600-1) | | 1940-1½ 556 (600-1½) | 2000-2 616 (700-2) | 2020-2¼ 636 (700-2¼) |
| DME MINIMUMS | | | | | |
| S-30C | 1800-1 420 (500-1) | | 1800-1¼ 420 (500-1¼) | | 1800-1½ 420 (500-1½) |
| SIDESTEP 30R | 1800-1 418 (500-1) | | 1800-1½ 418 (500-1½) | 1800-2 418 (500-2) | |
| CIRCLING | 1880-1 496 (500-1) | | 1880-1½ 496 (500-1½) | 2000-2 616 (700-2) | 2020-2¼ 636 (700-2¼) |

TUCSON 116.0 TUS, Chan 107

ELEV 1384 **TDZE 30C 1380** **TDZE 30R 1382**

HIRL Rwy 12L-30R and 12C-30C
REIL Rwy 12L and 30R
MIRL Rwy 12R-30L

FAF to MAP 5.8 NM

| | | | | | |
|---------|------|------|------|------|------|
| Knots | 60 | 90 | 120 | 150 | 180 |
| Min:Sec | 5:48 | 3:52 | 2:54 | 2:19 | 1:56 |

SW-4, 07 AUG 2025 to 04 SEP 2025

SW-4, 07 AUG 2025 to 04 SEP 2025