

WAAS CH <b>62911</b> <b>W30A</b>	APP CRS <b>303°</b>	Rwy Idg <b>10201</b> TDZE <b>1380</b> Apt Elev <b>1384</b>
--	------------------------	--

RNAV (GPS) Y RWY 30C

MESA GATEWAY (IWA)

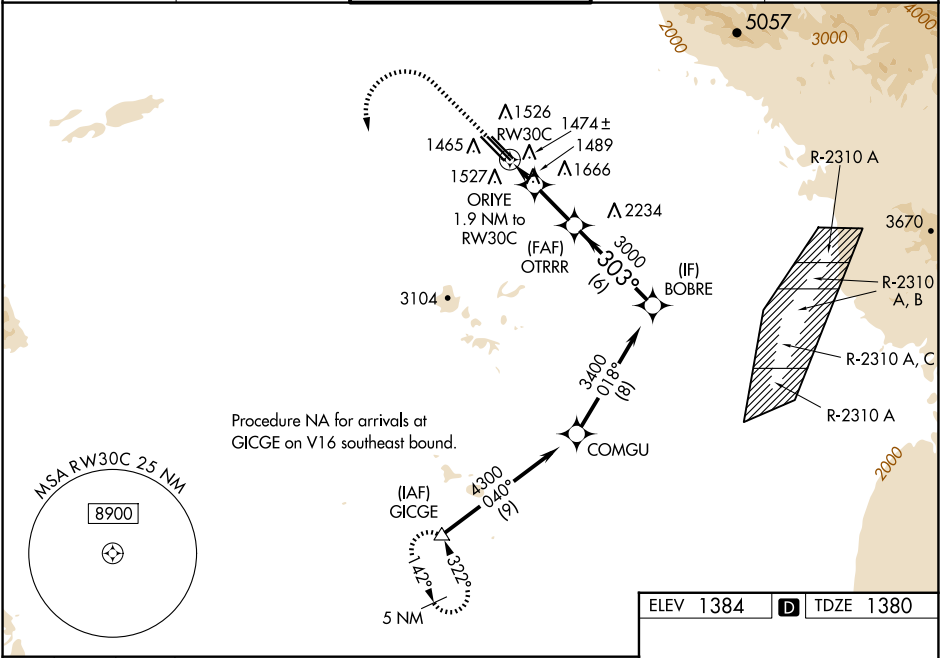
⚠

For uncompensated Baro-VNAV systems, LNAV/VNAV NA below -2°C (29°F) or above 35°C (95°F). DME/DME RNP-0.3 NA. When local altimeter setting not received, use Phoenix Sky Harbor Intl altimeter setting and increase LPV DA to 1660 feet, LNAV/VNAV DA to 1710 feet and all MDA 80 feet; increase LPV all Cats visibility ⅓ SM, increase LNAV/VNAV all Cats, LNAV Cats C, D and E, and Circling Cats D, E visibility ¼ SM. VDP and Baro-VNAV NA with Phoenix Sky Harbor Intl altimeter setting.

MISSED APPROACH:

Climb to 2800 then climbing left turn to 5000 direct GICGE and hold.

ATIS <b>133.5 270.275</b>	PHOENIX APP CON <b>124.9 353.8</b>	GATEWAY TOWER ★ <b>120.6 (CTAF) 289.4</b>	GND CON <b>128.25 275.8</b>	CLNC DEL <b>135.05</b>
------------------------------	---------------------------------------	--	--------------------------------	---------------------------



<div>2800 5000 GICGE</div> <div><div>↑</div><div>↙</div><div>△</div></div>	VGSI and RNAV glidepath not coincident (VGSI Angle 3.00/TCH 49).				
*LNAV only.	<div><div>ORIYE 1.9 NM to RW30C</div><div>*1.2 NM to RW30C</div><div>RW30C</div><div>2020*</div><div>OTRRR 3000</div><div>BOBRE 3400</div><div>303°</div><div>3000</div><div>GP 3.00° TCH 42</div><div>1.2 NM 0.7 3.1 NM 6 NM</div></div>				
CATEGORY	A	B	C	D	E
LPV DA	1580-¾ 200 (200-¾)				
LNAV/VNAV DA	1630-⅞ 250 (300-⅞)				
LNAV MDA	1800-1 420 (500-1)	1800-1⅛ 420 (500-1⅛)			
CIRCLING	1880-1 496 (500-1)	1880-1½ 496 (500-1½)	2000-2 616 (700-2)	2040-2¼ 656 (700-2¼)	

ELEV 1384 D TDZE 1380

MIRL Rwy 12R-30L  
HIRL Rwys 12L-30R and 12C-30C  
REIL Rwys 12L and 30R

SW-4, 07 AUG 2025 to 04 SEP 2025

SW-4, 07 AUG 2025 to 04 SEP 2025