

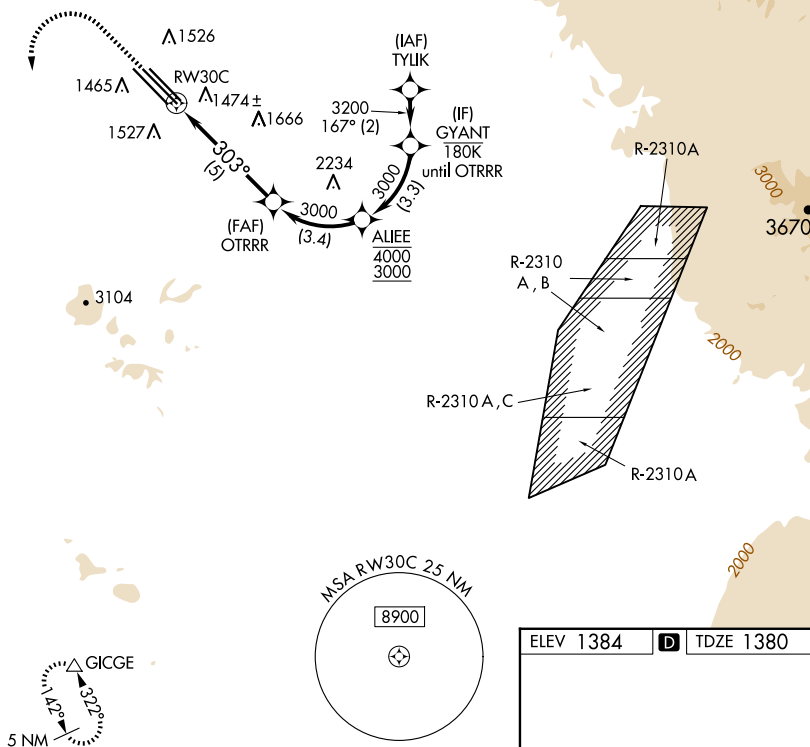
APP CRS	Rwy Idg	10201
<b>303°</b>	TDZE	<b>1380</b>
	Apt Elev	<b>1384</b>

RNAV (RNP) Z RWY 30C  
MESA GATEWAY (IWA)

**T** For uncompensated Baro-VNAV systems, procedure NA below -17°C (2°F) or above 54°C (130°F). GPS and RF required.

**MISSED APPROACH:** Climb to 2800 then climbing left turn to 5000 direct GICGE and hold.

ATIS <b>133.5 270.275</b>	PHOENIX APP CON <b>124.9 353.8</b>	GATEWAY TOWER ★ <b>120.6 (CTAF) 289.4</b>	GND CON <b>128.25 275.8</b>	CLNC DEL <b>135.05</b>
------------------------------	---------------------------------------	--	--------------------------------	---------------------------



2800 5000 GICGE

VGSI and RNAV glidepath not coincident  
(VGSI Angle 3.00/TCH 49).

GYANT

OTRR 3000

AUEE

3200

RW30C

303°

3000

4000  
3000

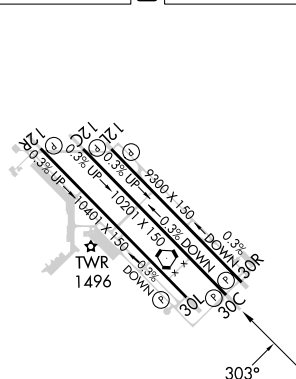
GP 3.00°  
TCH 42

5 NM 3.4 NM 3.3 NM

CATEGORY	A	B	C	D
RNP 0.21 DA		1637- $\frac{7}{8}$	257 (300- $\frac{7}{8}$ )	
RNP 0.30 DA		1711-1 $\frac{1}{8}$	331 (400-1 $\frac{1}{8}$ )	

**AUTHORIZATION REQUIRED**

ELEV 1384	<b>D</b>	TDZE 1380
-----------	----------	-----------



MIRL Rwy 12R-30L  
HIRL Rwys 12L-30R and 12C-30C  
REIL Rwys 12L and 30R

PHOENIX, ARIZONA  
Orig-B 14SEP17

33°18'N-111°39'W

MESA GATEWAY (IWA)

RNAV (RNP) Z RWY 30C

SW-4, 07 AUG 2025 to 04 SEP 2025

SW-4, 07 AUG 2025 to 04 SEP 2025