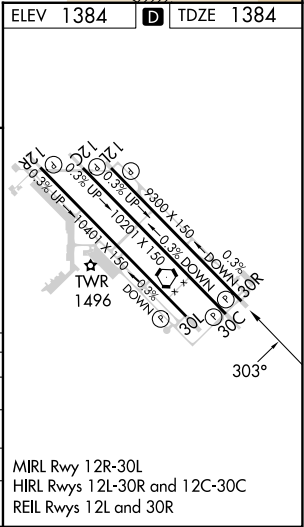
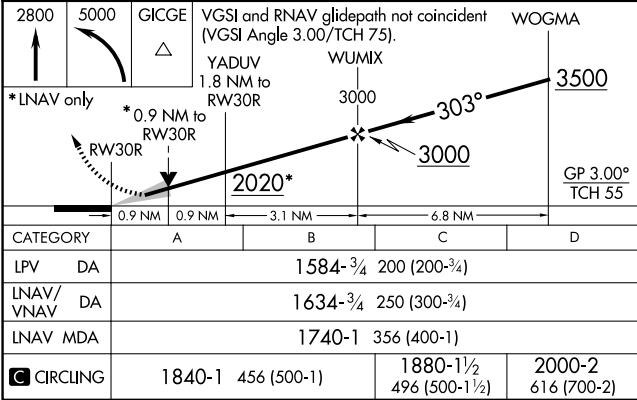
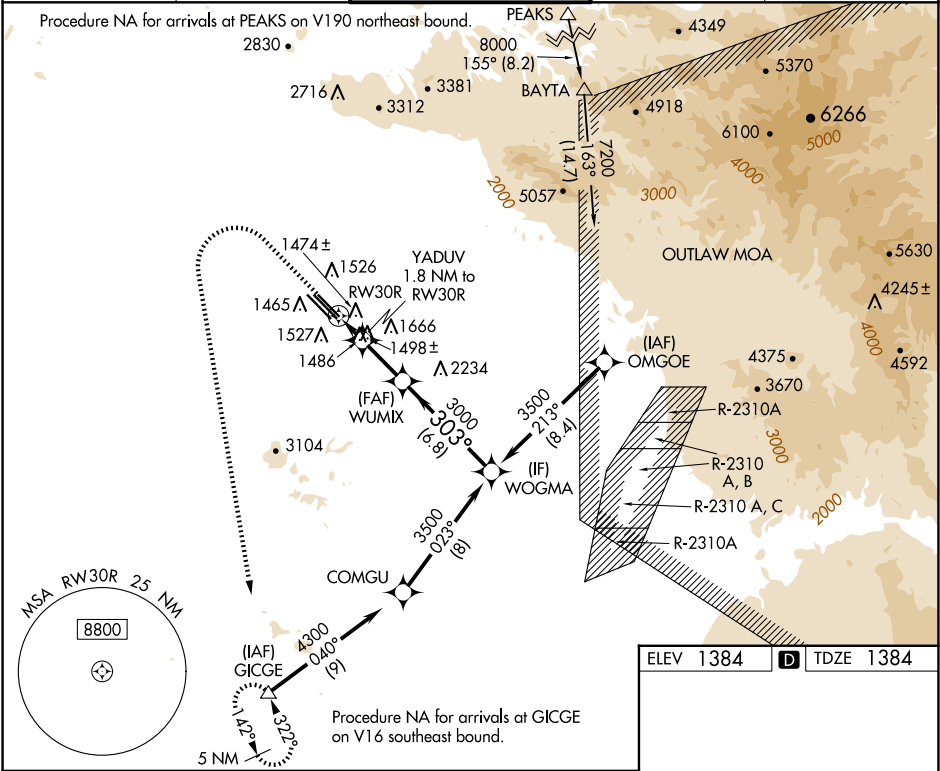


WAAS CH 69343 W30D	APP CRS 303°	Rwy ldg 9300 TDZE 1384 Apt Elev 1384
--	------------------------	---

RNAV (GPS) RWY 30R
MESA GATEWAY (IWA)

RNP APCH-GPS. For uncompensated Baro-VNAV systems, LNAV/VNAV NA below -17°C or above 54°C.	MISSED APPROACH: Climb to 2800 then climbing left turn to 5000 direct to GICGE and hold.
---	--

ATIS 133.5 270.275	PHOENIX APP CON 124.9 353.8	GATEWAY TOWER ★ 120.6 (CTAF) 289.4	GND CON 128.25 275.8	CLNC DEL 135.05
------------------------------	---------------------------------------	--	--------------------------------	---------------------------



SW-4, 07 AUG 2025 to 04 SEP 2025

SW-4, 07 AUG 2025 to 04 SEP 2025