

PHOENIX, ARIZONA

AL-74 (FAA)

25051

WAAS CH 58200 W12A	APP CRS 123°	Rwy Idg 10201 TDZE 1359 Apt Elev 1384
--	------------------------	--

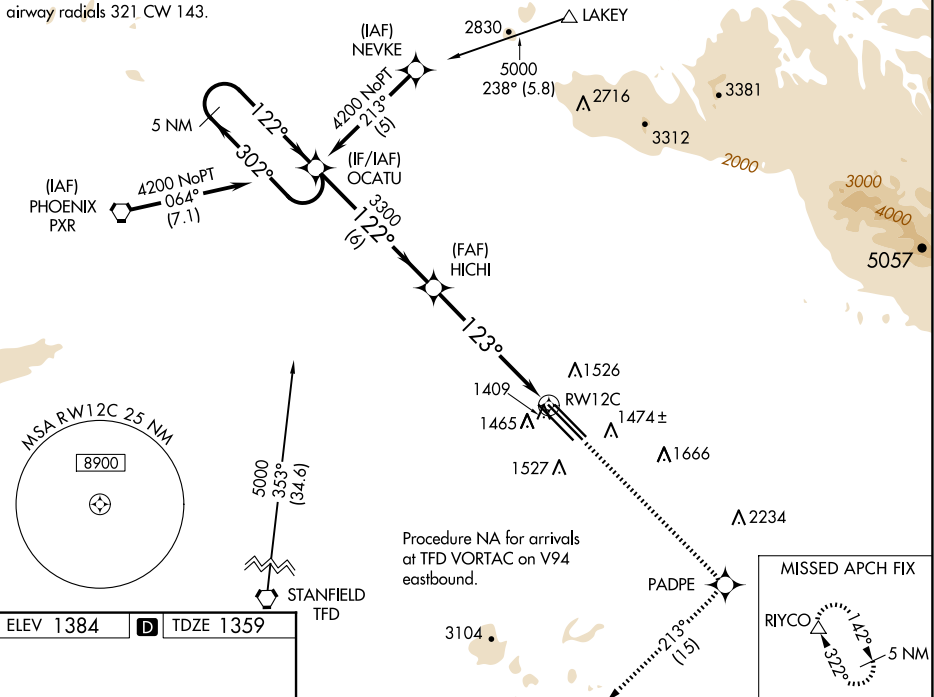
RNAV (GPS) RWY 12C
MESA GATEWAY (IWA)

T DME/DME RNP-0.3 NA.
A For uncompensated Baro-VNAV systems LNAV/VNAV NA below -17°C (2°F) or above 46°C (115°F).

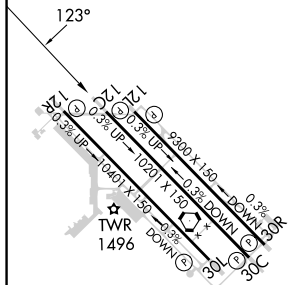
MISSED APPROACH: Climb to 5000 direct PADPE and on 213° track to RIYCO and hold.

ATIS 133.5 270.275	PHOENIX APP CON 124.9 353.8	GATEWAY TOWER ★ 120.6 (CTAF) 289.4	GND CON 128.25 275.8	CLNC DEL 135.05
-----------------------	--------------------------------	---------------------------------------	-------------------------	--------------------

Procedure NA for arrivals on PXR VORTAC
airway radials 321 CW 143.



ELEV 1384	D	TDZE 1359
-----------	----------	-----------



5 NM Holding Pattern OCATU		HICHI		5000 	PADPE 	213° tr	RYCO
4200 ← 302° 122° →		122°		3300		*1.1 NM to RW12C *LNAV only.	
GP 3.00° TCH 50		3300		123°		RW12C	
6 NM		4.8 NM		1.1			
CATEGORY	A	B	C	D	E		
LPV DA	1609-1 250 (300-1)						
LNAV/VNAV DA	1686-1¼ 327 (400-1¼)						
LNAV MDA	1740-1 381 (400-1)				1740-1¼ 381 (400-1¼)		
CIRCLING	1840-1¼ 456 (500-1¼)		1880-1½ 496 (500-1½)		2000-2 616 (700-2)		2020-2¼ 636 (700-2¼)

MIRL Rwy 12R-30L
HIRL Rwy 12L-30R and 12C-30C
REIL Rwy 12L and 30R

PHOENIX, ARIZONA
Amdt 1C 17JUN21

33°18'N-111°39'W

MESA GATEWAY (IWA)
RNAV (GPS) RWY 12C