

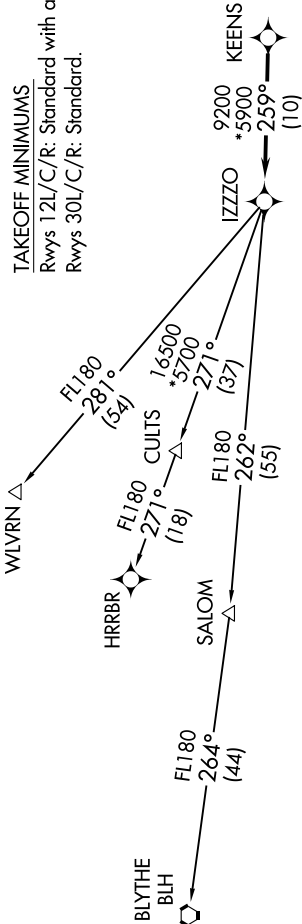
PHOENIX DEP CON
124.9 353.8
ATIS
133.5 270.275
CLNC DEL
135.05
GND CON
128.25 275.8
GATEWAY TOWER★
120.6 289.4

TOP ALTITUDE:
ASSIGNED BY ATC

RNAV 1 - GPS.
RADAR required.

- NOTE: Turbojets and turboprops only.
NOTE: Aircraft requesting FL220 and below must file BLYTHE Transition.
NOTE: Turbojets landing LAX, file WLVRN Transition.
NOTE: Aircraft landing other than LAX and turboprops landing at LAX: Requesting FL240 and above, file HRRBR Transition.
NOTE: Aircraft departing KGEU and KGYR ATC assigned only.

TAKEOFF MINIMUMS
Rwys 12L/C/R: Standard with a minimum climb of 250' /NM to 3100.
Rwys 30L/C/R: Standard.



DEPARTURE ROUTE DESCRIPTION

TAKEOFF RUNWAYS 12L/C/R: Climb on heading 124° or as assigned by ATC, thence. . .
TAKEOFF RUNWAYS 30L/C/R: Climb on heading 304° or as assigned by ATC, thence. . .
...for RADAR vectors to KEENS, then on track 259° to IZZZO, then on (transition).
Maintain ATC assigned altitude, expect filed altitude 3 minutes after departure.

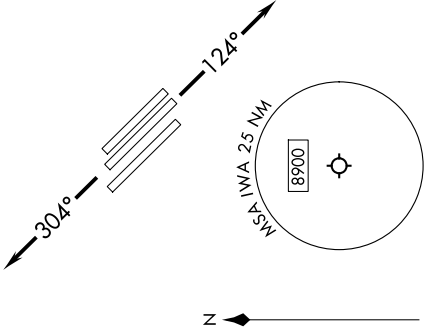
- BLYTHE TRANSITION (IZZZO8.BLH)
HRRBR TRANSITION (IZZZO8.HRRBR)
WLVRN TRANSITION (IZZZO8.WLVRN)

(IZZZO8.IZZZO) 25051

IZZZO EIGHT DEPARTURE (RNAV)

AL-74 (FAA)

MESA GATEWAY (IWA)
PHOENIX, ARIZONA



NOTE: Chart not to scale.

IZZZO EIGHT DEPARTURE (RNAV)

(IZZZO8.IZZZO) 25JAN24

PHOENIX, ARIZONA
MESA GATEWAY (IWA)