

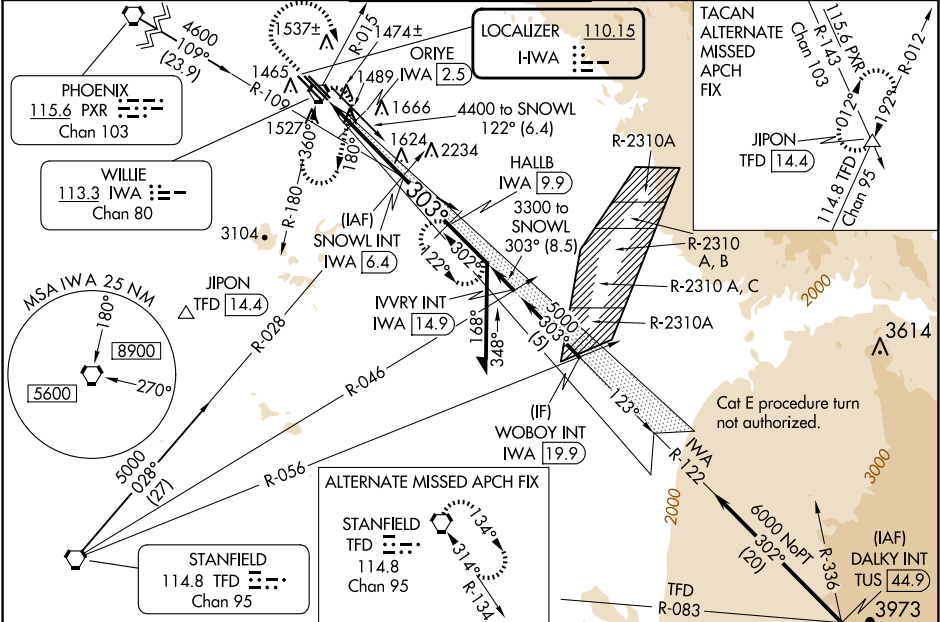
LOC I-WWA	APP CRS	Rwy Idg	10201
110.15	303°	TDZE	1380
		Apt Elev	1384

ILS or LOC RWY 30C  
MESA GATEWAY (IWA)

**⚠** When local altimeter setting not received, use Phoenix Sky Harbor Intl altimeter setting and increase S-ILS DA to 1660 feet and all MDA 80 feet, increase S-ILS 30C, S-LOC 30C all Cats and Circling Cats C/D/E visibility ¼ SM.

**MISSED APPROACH:** Climb to 2800 then climbing right turn to 5000 via heading 145° and IWA VORTAC R-015 to IWA VORTAC and hold, continue climb-in-hold to 5000 (TACAN aircraft continue via IWA VORTAC R-122 to HALLB/9.9 DME and hold, continue climb-in-hold to 5000, hold SE, LT, 302° inbound).

ATIS 133.5 270.275	PHOENIX APP CON 124.9 353.8	GATEWAY TOWER ★ 120.6 (CTAF) 289.4	GND CON 128.25 275.8	CLNC DEL 135.05
-----------------------	--------------------------------	---------------------------------------	-------------------------	--------------------



2800 5000 IWA R-015 IWA

VGSI and ILS glidepath not coincident (VGSI Angle 3.00/TCH 49).

GS 3.00° TCH 41

1940\*#

1.9 NM 3.9 NM

3300 3700 3300

123° 303°

Remain within 10 NM

\*2020 when using Phoenix Sky Harbor Intl altimeter setting.

#LOC only

CATEGORY	A	B	C	D	E
S-ILS 30C		1580-¾	200 (200-¾)		
S-LOC 30C	1940-1	560 (600-1)	1940-1½ 560 (600-1½)	1940-1¾ 560 (600-1¾)	1940-2 560 (600-2)
CIRCLING	1940-1	556 (600-1)	1940-1½ 556 (600-1½)	2000-2 616 (700-2)	2020-2¼ 636 (700-2¼)
ORIYE FIX MINIMUMS					
S-LOC 30C	1800-1	420 (500-1)	1800-1¼ 420 (500-1¼)	1800-1½ 420 (500-1½)	
CIRCLING	1880-1	496 (500-1)	1880-1½ 496 (500-1½)	2000-2 616 (700-2)	2020-2¼ 636 (700-2¼)

TUCSON  
116.0 TUS  
Chan 107

ELEV 1384 TDZE 1380

MIRL Rwy 12R-30L  
HIRL Rwy 12L-30R and 12C-30C  
REIL Rwy 12L and 30R

9000 336° (44.9)

3973

303°

FAF to MAP 5.8 NM

Knots	60	90	120	150	180
Min:Sec	5:48	3:52	2:54	2:19	1:56

SW-4, 07 AUG 2025 to 04 SEP 2025

SW-4, 07 AUG 2025 to 04 SEP 2025