

WAAS CH <b>86306</b> <b>W08A</b>	APP CRS <b>077°</b>	Rwy Ldg <b>8679</b> TDZE <b>5344</b> Apt Elev <b>5344</b>
--	------------------------	---

RNAV (GPS) RWY 8

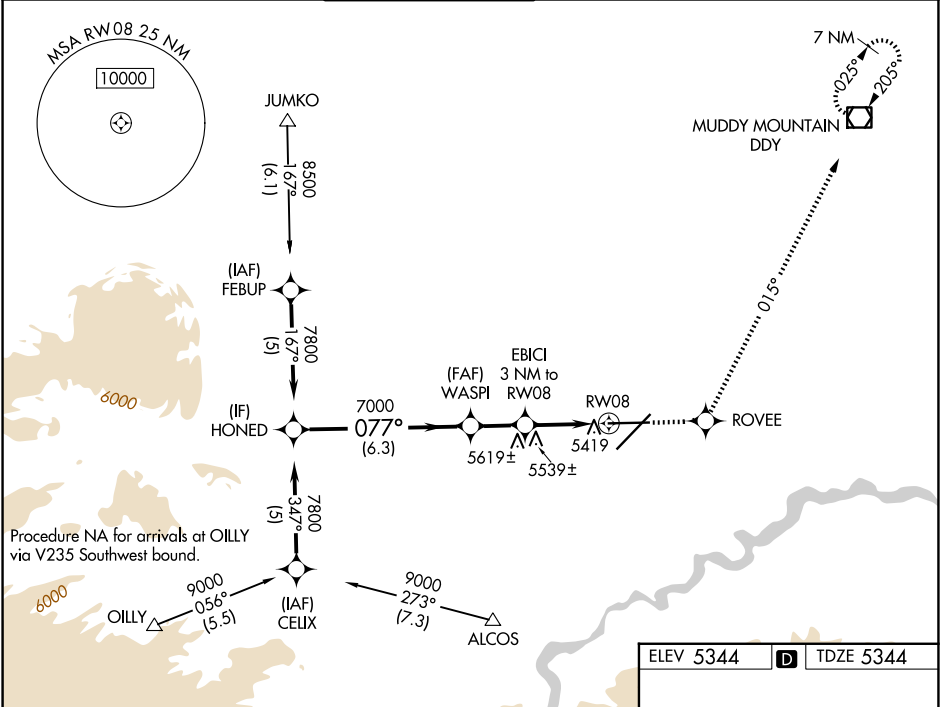
CASPER/NATRONA COUNTY INTL (CPR)

⚠ For uncompensated Baro-VNAV systems, LNAV/VNAV NA below -25°C (-13°F) or above 38°C (100°F).  
DME/DME RNP-0.3 NA.

MALSR

MISSED APPROACH: Climb to 7700 direct ROVEE and via track 015° to DDY VOR/DME and hold.

ATIS <b>126.15</b>	CASPER APP CON ★ <b>120.65 354.1</b>	CASPER TOWER ★ <b>118.3 (CTAF) 0 257.8</b>	GND CON <b>121.9</b>	CLNC DEL <b>121.9 257.8</b>	UNICOM <b>122.95</b>
-----------------------	---	---	-------------------------	--------------------------------	-------------------------



VGSI and RNAV glidepath not coincident (VGSI Angle 3.00 / TCH 52).

Procedure Turn NA

HONED 7800

WASPI 7000

EBICI 3 NM to RW08

RW08

GP 3.00° TCH 55

6.3 NM

2 NM

1.7 NM

1.3 NM

\*LNAV only

\*1.3 NM to RW08

\*6360

CATEGORY	A	B	C	D
LPV DA	5594/24 250 (300-½)			
LNAV/VNAV DA	5689/40 345 (400-¾)			
LNAV MDA	5800/24 456 (500-½)	5800/40 456 (500-¾)	5800/50 456 (500-1)	
CIRCLING	5800-1 456 (500-1)	5860-1½ 516 (600-1½)	6200-2¾ 856 (900-2¾)	

ELEV 5344 D TDZE 5344

7700 ROVEE tr 015° DDY

077°

0.4% UP

8679 X 150

26

101.65 X 150

TWR

REIL Rwy 21

HIRL Rwy 3-21 and 8-26

NW-1, 07 AUG 2025 to 04 SEP 2025

NW-1, 07 AUG 2025 to 04 SEP 2025