

WAAS CH 73006 W03A	APP CRS 032°	Rwy Ldg 10165 TDZE 5328 Apt Elev 5344
--	------------------------	--

RNAV (GPS) RWY 3

CASPER/NATRONA COUNTY INTL (CPR)

▼

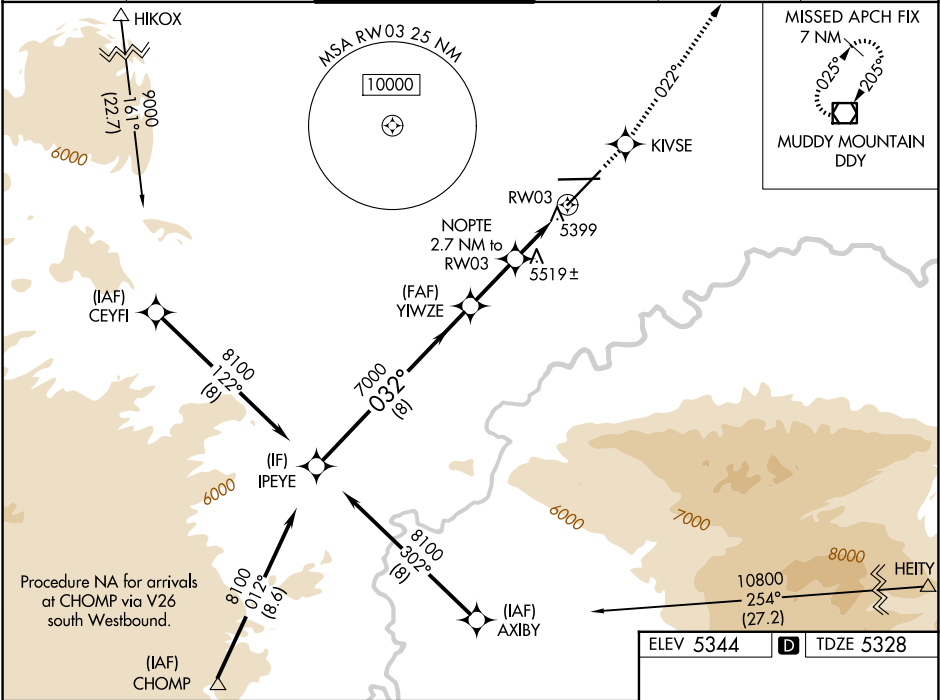
▲

For inoperative MALSR, increase LPV all Cats visibility to 1 mile.
For uncompensated Baro-VNAV systems, LNAV/VNAV NA below -25°C (-13°F) or above 38°C (100°F).
DME/DME RNP-0.3 NA.

MALSR

MISSED APPROACH: Climb to 7500
direct KIVSE and via track 022° to
DDY VOR/DME and hold.

ATIS 126.15	CASPER APP CON ★ 120.65 354.1	CASPER TOWER ★ 118.3 (CTAF) 0 257.8	GND CON 121.9	CLNC DEL 121.9 257.8	UNICOM 122.95
-----------------------	---	---	-------------------------	--------------------------------	-------------------------



Procedure Turn NA	IPEYE	8100	032°	7000	YWZE	NOPT 2.7 NM to RW03	*1.3 NM to RW03	RW03	*6240	*LNAV only	<div><div>7500</div><div>↑</div></div>	<div><div>KIVSE</div><div>✦</div></div>	<div><div>tr 022°</div><div>↗</div></div>	<div><div>DDY</div><div>◻</div></div>
GP 3.00°	TCH 52	<div><div>8 NM</div><div>2.3 NM</div><div>1.4 NM</div><div>1.3 NM</div><div></div></div>												
CATEGORY		A		B		C		D						
LPV DA		5643/24					315 (300-½)							
LNAV/ VNAV DA		5691/40					363 (400-¾)							
LNAV MDA		5780/24	452 (500-½)			5780/40 452 (500-¾)			5780/50 452 (500-1)					
CIRCLING		5780-1 436 (500-1)	5800-1 456 (500-1)			5860-1½ 516 (600-1½)			6200-2¾ 856 (900-2¾)					

