

WAAS CH 78112 W26A	APP CRS 257°	Rwy Ldg TDZE 5335 Apt Elev 5344
--	------------------------	---

RNAV (GPS) RWY 26

CASPER/NATRONA COUNTY INTL (CPR)

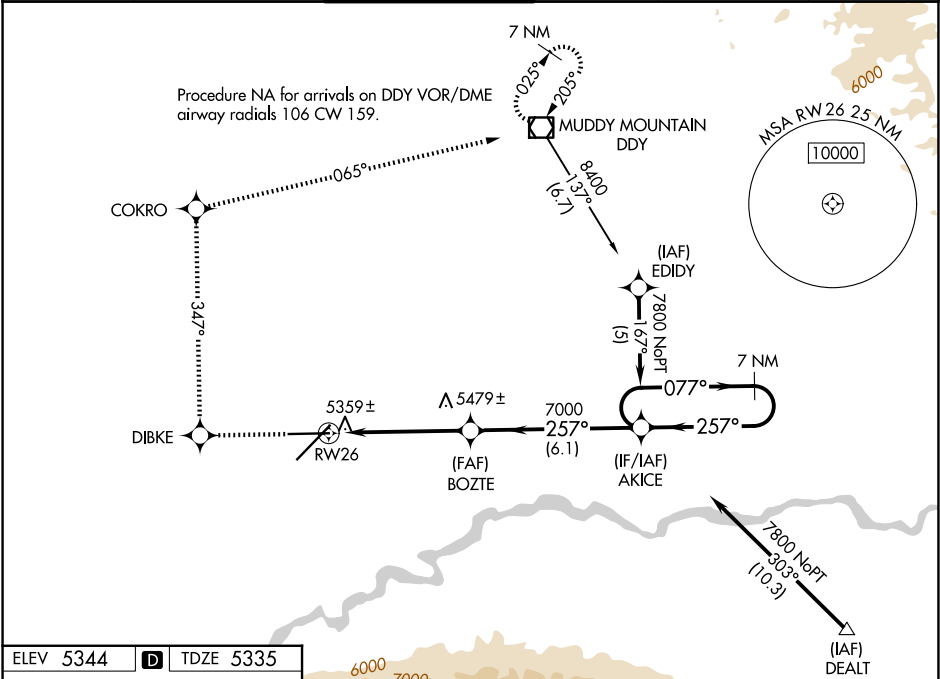
▼

▲

For uncompensated Baro-VNAV systems, LNAV/VNAV NA below -25°C (-13°F) or above 38°C (100°F).
DME/DME RNP-0.3 NA.

MISSED APPROACH: Climb to 8400 direct DIBKE and right turn via track 347° to COKRO and via track 065° to DDY VOR/DME and hold.

ATIS 126.15	CASPER APP CON * 120.65 354.1	CASPER TOWER * 118.3 (CTAF) 0 257.8	GND CON 121.9	CLNC DEL 121.9 257.8	UNICOM 122.95
-----------------------	---	---	-------------------------	--------------------------------	-------------------------



ELEV 5344	D	TDZE 5335
-----------	----------	-----------

8400

DIBKE

tr 347°

COKRO

tr 065°

DDY

VGSI and RNAV glidepath not coincident (VGSI Angle 3.00/TCH 50).

AKICE

7 NM Holding Pattern

GP 3.00° TCH 40

*LNAV only

1.2 NM to RW26

3.9 NM

6.1 NM

REIL Rwy 21

HIRL Rwy 3-21 and 8-26

CATEGORY	A	B	C	D
LPV DA	5585-1 250 (300-1)			
LNAV/VNAV DA	5629-1 294 (300-1)			
LNAV MDA	5740-1 405 (400-1)		5740-1¼ 405 (400-1¼)	
CIRCLING	5780-1 436 (500-1)	5800-1 456 (500-1)	5860-1½ 516 (600-1½)	6200-2¾ 856 (900-2¾)