

WAAS CH 63012 W21A	APP CRS 212°	Rwy Ldg TDZE 5330 Apt Elev 5344
--	------------------------	---

RNAV (GPS) RWY 21

CASPER/NATRONA COUNTY INTL (CPR)

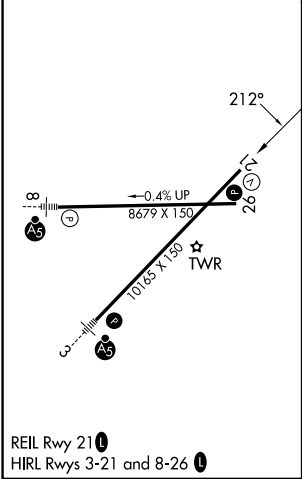
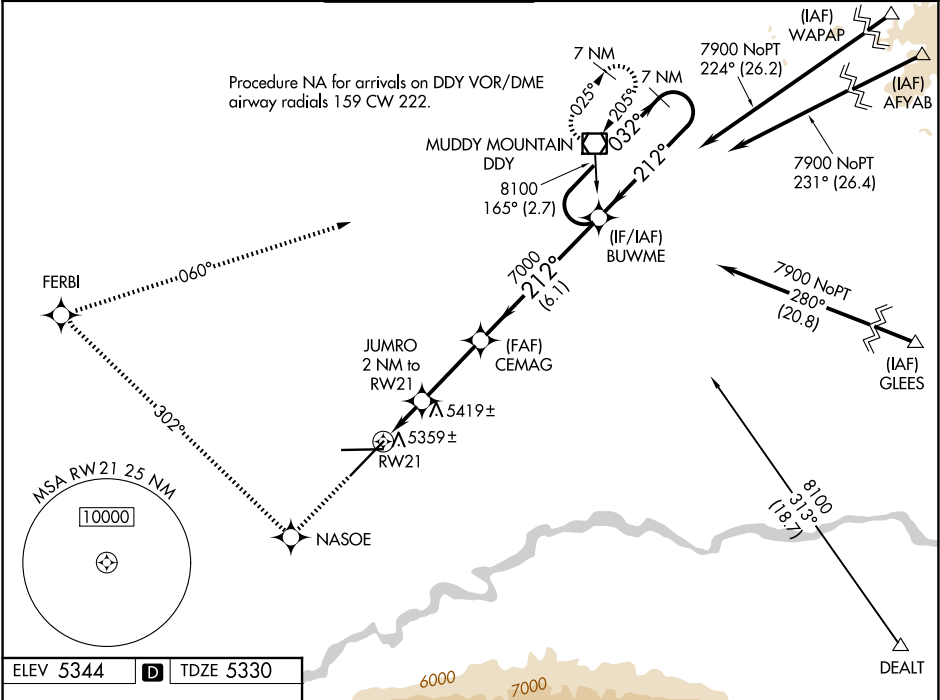
⚠

For uncompensated Baro-VNAV systems, LNAV/VNAV NA below -25°C (-13°F) or above 38°C (100°F).
DME/DME RNP-0.3 NA.

⚠

MISSED APPROACH: Climb to 8100 direct NASOE and right turn via track 302° to FERBI and via track 060° to DDY VOR/DME and hold.

ATIS 126.15	CASPER APP CON ★ 120.65 354.1	CASPER TOWER ★ 118.3 (CTAF) 0 257.8	GND CON 121.9	CLNC DEL 121.9 257.8	UNICOM 122.95
-----------------------	---	---	-------------------------	--------------------------------	-------------------------



8100	NASOE	tr 302°	FERBI	tr 060°	DDY	7 NM Holding Pattern
* LNAV only						
JUMRO 2 NM to RW21						
* 0.9 NM to RW21						
6020*						
0.9 1.1 NM 3 NM 6.1 NM						
CATEGORY	A	B	C	D		
LPV DA	5580-3/4 250 (300-3/4)					
LNAV/VNAV DA	5629-1 299 (300-1)					
LNAV MDA	5680-1 350 (400-1)					
CIRCLING	5780-1 436 (500-1)	5800-1 456 (500-1)	5860-1 516 (600-1 1/2)	6200-2 3/4 856 (900-2 3/4)	5680-1 1/4 350 (400-1 1/4)	