

LOC I-SYD 111.3	APP CRS 032°	Rwy Ldg TDZE 5328 Apt Elev 5344
---------------------------	------------------------	---

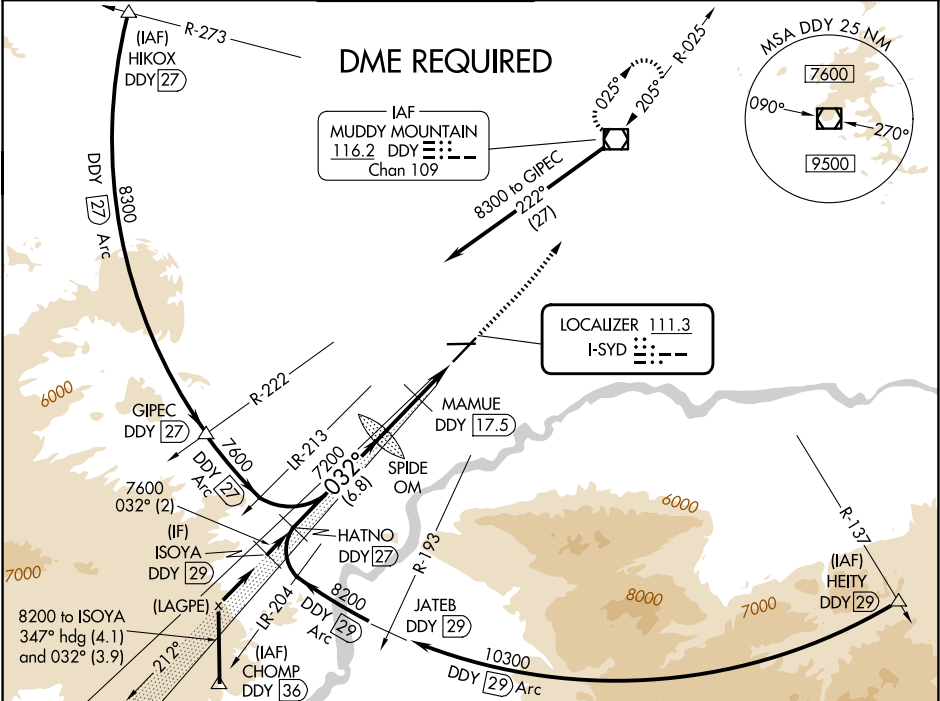
ILS or LOC RWY 3
CASPER/NATRONA COUNTY INTL (CPR)

DME from DDY VOR/DME. Simultaneous reception of I-SYD and DDY DME required. When local alimeter setting not received, use Douglas alimeter setting and increase DA to 5697 feet and all MDAs 180 feet, increase S-ILS visibility all Cats ¼ SM and S-LOC visibility Cat B, C, D and Circling Cats B, C, D visibility ½ SM, increase MAMUE FIX MINIMUM Circling visibility Cat C ½ SM and Cat D ¼ SM. For inoperative MALSR when using Douglas alimeter setting increase S-ILS visibility all Cats to 1¼ mile. MAMUE FIX MINIMUMS: For inoperative MALSR, increase S-LOC visibility Cats C, and D to 1½ mile. #RVR 1800 authorized with use of FD or AP or HUD to DA.

MALSR

MISSED APPROACH:
Climb to 7500
then left turn direct
DDY VOR/DME
and hold.

ATIS 126.15	CASPER APP CON ★ 120.65 354.1	CASPER TOWER ★ 118.3 (CTAF) 257.8	GND CON 121.9	CLNC DEL 121.9 257.8	UNICOM 122.95
-----------------------	---	---	-------------------------	--------------------------------	-------------------------



ISOYA DDY 29	*6400 when using Douglas alimeter setting.	7500	DDY	ELEV 5344	TDZE 5328
8200	032°	7600	7200	7183	MAMUE DDY 17.5
GS 3.00° TCH 50	2 NM	6.8 NM	2.9 NM	2.7 NM	DDY 14.7
CATEGORY	A	B	C	D	
S-ILS 3	#5528/24 200 (200-½)				
S-LOC 3	6220/40	892 (900-¾)	6220-2	892 (900-2)	
CIRCLING	6220-1¼	876 (900-1¼)	6220-2½ 876 (900-2½)	6220-2¾ 876 (900-2¾)	
MAMUE FIX MINIMUMS					
S-LOC 3	5740/24	412 (400-½)	5740/40	412 (400-¾)	
CIRCLING	5740-1 396 (400-1)	5800-1 456 (500-1)	5860-1½ 516 (600-1½)	6200-2¾ 856 (900-2¾)	
				REIL Rwy 21 0	
				HIRL Rwy 3-21 and 8-26 0	
				FAF to MAP 5.6 NM	
				Knots 60 90 120 150 180	
				Min:Sec 5:36 3:44 2:48 2:14 1:52	

NW-1, 07 AUG 2025 to 04 SEP 2025

NW-1, 07 AUG 2025 to 04 SEP 2025