
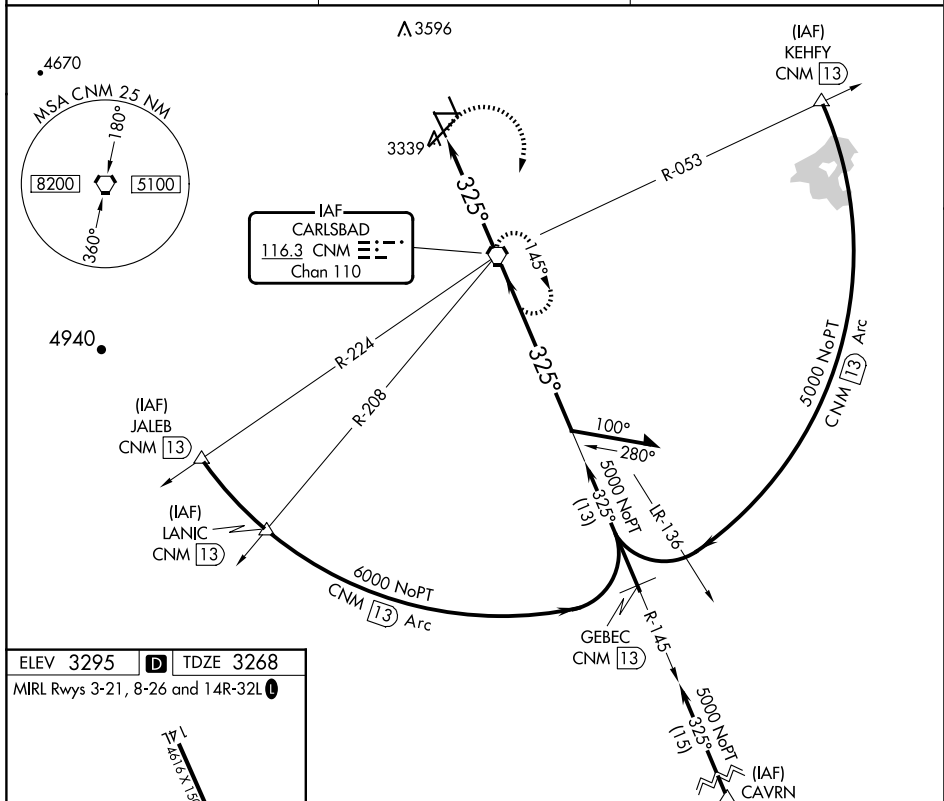


VOR RWY 32L  
CAVERN CITY AIR TRML (CNM)

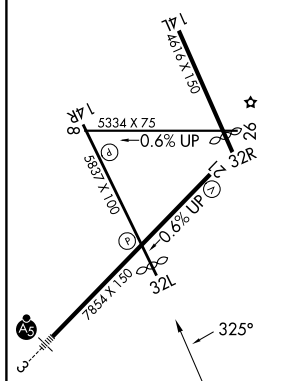
- |  |  |   |
|--|--|---|
| <br> | <p>When local altimeter setting not received, use Artesia Muni altimeter setting and increase all MDA 120 feet and S-32L Cats C/D visibility to 1½, Circling Cat C visibility to 2¼.</p> | <p>MISSED APPROACH: Climbing right turn to 5000 direct CNM VORTAC and hold.</p> |
|--|--|---|

ASOS <b>118.375</b>	ALBUQUERQUE CENTER <b>135.875 292.15</b>	UNICOM <b>123.0 (CTAF) 0</b>
------------------------	---	---------------------------------



ELEV 3295	<b>D</b>	TDZE 3268
MIRL Rwy 3-21, 8-26 and 14R-32L <b>L</b>		

MIRL Rwy 3-21, 8-26 and 14R-32L L



FAF to MAP 4.7 NM

Knots	60	90	120	150	180
Min:Sec	4:42	3:08	2:21	1:53	1:34

Diagram illustrating a VORTAC approach procedure. The diagram shows a 5000 ft MSL altitude, a 3.40° TCH 40, and a 1.45° descent angle. It also shows a 325° heading and a 5000 ft MSL altitude. The diagram includes a table with categories A, B, C, and D, and their corresponding altitudes.

CATEGORY	A	B	C	D
S-32L	3680-1	412 (400-1)	3680-1¼	412 (400-1¼)
<b>C</b> CIRCLING	3700-1 405 (500-1)	3780-1 485 (500-1)	3960-1¾ 665 (700-1¾)	4260-3 965 (1000-3)