

LOC I-CVD <b>111.9</b>	APP CRS <b>034°</b>	Rwy Ldg TDZE Apt Elev	<b>7504</b> <b>3295</b> <b>3295</b>
---------------------------	------------------------	-----------------------------	---

ILS RWY 3

CAVERN CITY AIR TRML (CNM)

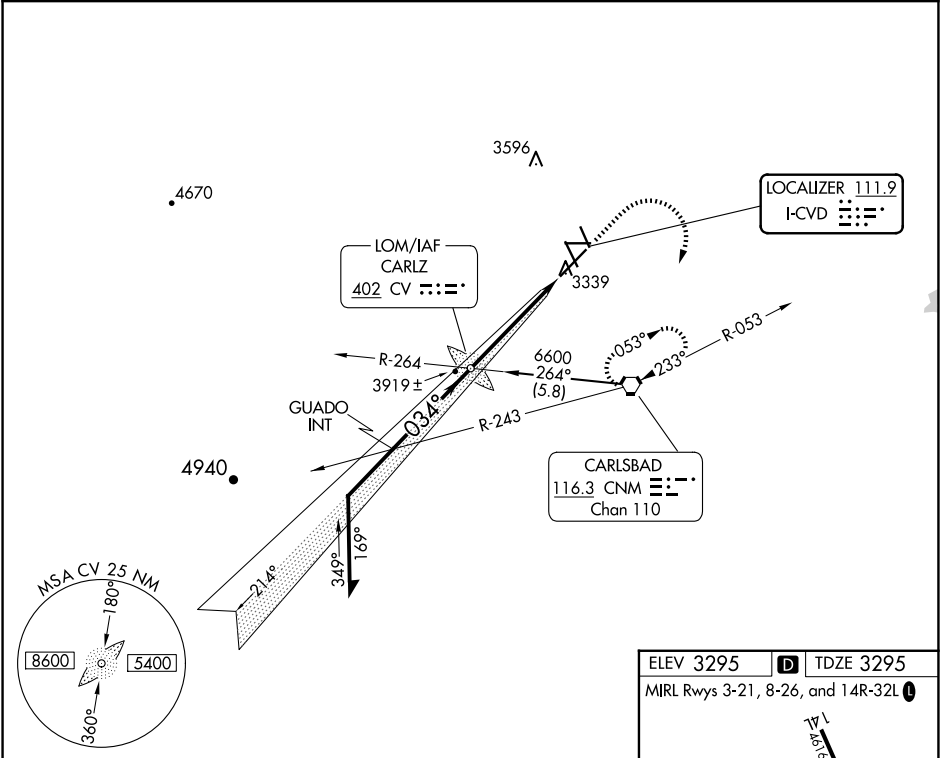
▼

▲

MALSR

MISSED APPROACH: Climb to 4000 then climbing right turn to 6600 direct CNM VORTAC and hold.

ASOS <b>118.375</b>	ALBUQUERQUE CENTER <b>135.875 292.15</b>	UNICOM <b>123.0 (CTAF) 0</b>
------------------------	---	---------------------------------



Remain within 10 NM

6600

034°

6100

6100

\*5000

4854

GUADO INT

214°

CARLZ LOM/INT

4000

6600

CNM

\*LOC only

GS 3.00°

TCH 51

4 NM

4.7 NM

CATEGORY	A	B	C	D
S-ILS 3	3495-½ 200 (200-½)			
S-LOC 3	3940-½ 645 (700-½)	3940-1¼ 645 (700-1¼)	3940-1½ 645 (700-1½)	3940-1 645 (700-1)
CIRCLING	3940-1 645 (700-1)	3960-1¾ 665 (700-1¾)	4260-3 965 (1000-3)	

ELEV 3295

D

TDZE 3295

MIRL Rwys 3-21, 8-26, and 14R-32L

14R

5334 X 75

0.6% UP

32R

5337 X 100

0.6% UP

32L

7854 X 150

034°

FAF to MAP 4.7 NM

Knots	60	90	120	150	180
Min:Sec	4:42	3:08	2:21	1:53	1:34

SW-1, 07 AUG 2025 to 04 SEP 2025

SW-1, 07 AUG 2025 to 04 SEP 2025