

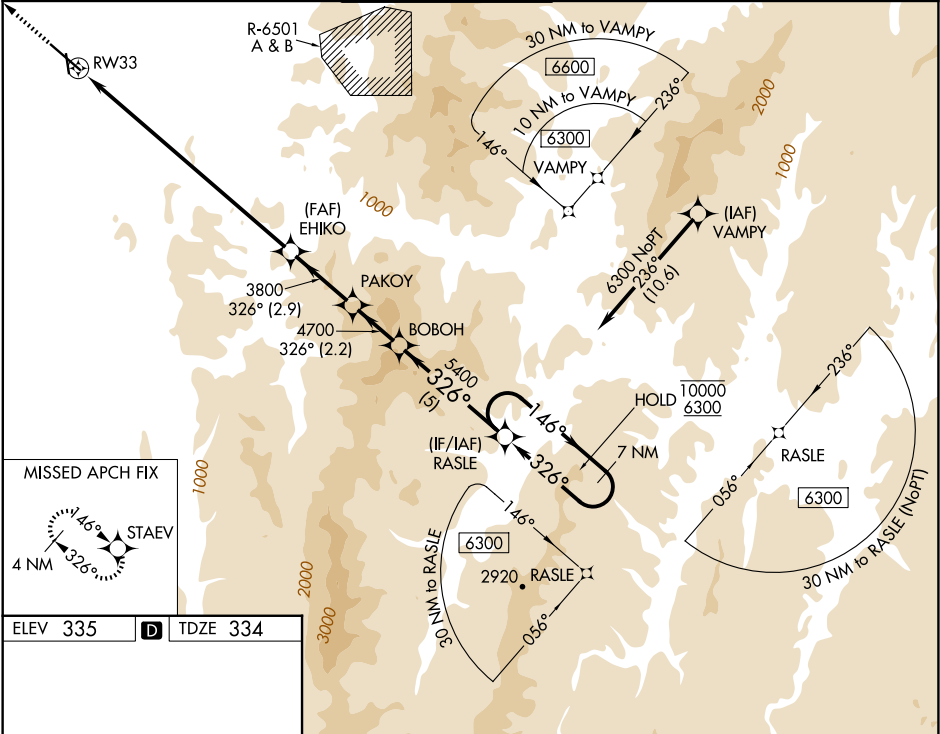
WAAS CH 65812 W33A	APP CRS 326°	Rwy Ldg TDZE 334 Apt Elev 335
--	------------------------	---

RNAV (GPS) Z RWY 33

PATRICK LEAHY BURLINGTON INTL (BTV)

RNP APCH - GPS.	MALSF	MISSED APPROACH: Climb to 3000 direct STAEV and hold.
<div><div><div></div><div></div><div></div></div><div>Rwy 33 helicopter visibility reduction below RVR 4000 NA. Inop table does not apply. For uncompensated Baro-VNAV systems, LNAV/VNAV NA below -25°C or above 37°C.</div></div>		

ATIS 123.8 269.9	BURLINGTON APP CON ★ 121.1 278.8	BURLINGTON TOWER ★ 118.3 (CTAF) 0 257.8	GND CON 126.3 348.6	CLNC DEL 119.15	UNICOM 122.95
----------------------------	--	---	-------------------------------	---------------------------	-------------------------



ELEV 335	D	TDZE 334
<div><div><div></div><div></div><div></div></div><div>MIRL Rwy 1-19 HIRL Rwy 15-33</div></div>		
<div><div><div></div><div></div><div></div></div><div>3000 STAEV</div></div>		
<div><div><div></div><div></div><div></div></div><div>RW33</div></div>		
<div><div><div></div><div></div><div></div></div><div>4.7 NM to RW33</div></div>		
<div><div><div></div><div></div><div></div></div><div>PAKOY</div></div>		
<div><div><div></div><div></div><div></div></div><div>BOBOH</div></div>		
<div><div><div></div><div></div><div></div></div><div>RASLE</div></div>		
<div><div><div></div><div></div><div></div></div><div>7 NM Holding Pattern</div></div>		
<div><div><div></div><div></div><div></div></div><div>146° → 10000</div></div>		
<div><div><div></div><div></div><div></div></div><div>← 326° 6300</div></div>		
<div><div><div></div><div></div><div></div></div><div>GP 3.20°</div></div>		
<div><div><div></div><div></div><div></div></div><div>TCH 55</div></div>		
CATEGORY	A	B
LPV DA	584/40	250 (300-¾)
LNAV/VNAV DA	1782-5	1448 (1500-5)
LNAV MDA	2000-1¼ 1666 (1700-1¼)	2000-3 1666 (1700-3)