

WAAS CH <b>72736</b> <b>W15A</b>	APP CRS <b>146°</b>	Rwy Ldg TDZE Apt Elev	<b>7820</b> <b>326</b> <b>335</b>
----------------------------------------	------------------------	-----------------------------	-----------------------------------------

RNAV (GPS) RWY 15

PATRICK LEAHY BURLINGTON INTL (BTV)

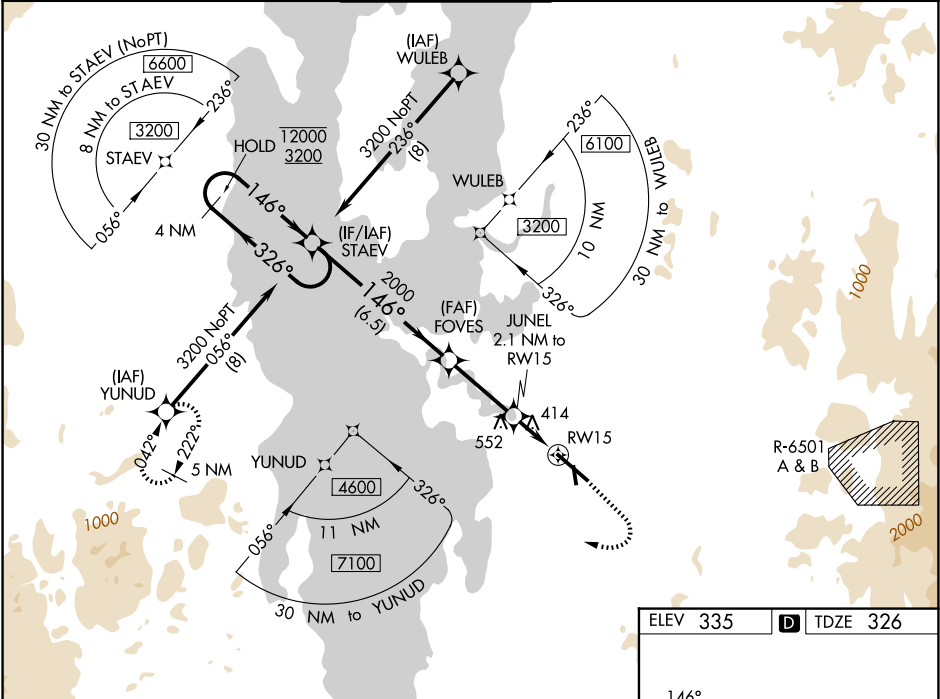
RNP APCH - GPS.

Circling Rwy 1 NA at night. Rwy 15 helicopter visibility reduction below RVR 4000 NA. Inop table does not apply to LPV. For uncompensated Baro-VNAV systems, LNAV/VNAV NA below -22°C or above 54°C. For inop ALS, increase LNAV/VNAV all Cats visibility to RVR 4500 and LNAV all Cats visibility to RVR 5500.

MALS

MISSED APPROACH: Climb to 1000 then climbing right turn to 5600 direct YUNUD and hold, continue climb-in-hold to 5600.

ATIS <b>123.8 269.9</b>	BURLINGTON APP CON ★ <b>121.1 278.8</b>	BURLINGTON TOWER ★ <b>118.3 (CTAF) 0 257.8</b>	GND CON <b>126.3 348.6</b>	CLNC DEL <b>119.15</b>	UNICOM <b>122.95</b>
----------------------------	--------------------------------------------	---------------------------------------------------	-------------------------------	---------------------------	-------------------------



4 NM Holding Pattern STADEV		1000	5600	YUNUD
12000 ← 326° 3200 → 146°		FOVES	2000	JUNEL 2.1 NM to RW15
GP 3.00° TCH 51		2000	1020	1 NM to RW15
		6.5 NM	3.1 NM	1.1 NM
CATEGORY	A	B	C	D
LPV DA		576/40	250 (300-¾)	
LNAV/VNAV DA		645/40	319 (400-¾)	
LNAV MDA		680/40	354 (400-¾)	
CIRCLING	840-1 505 (600-1)	860-1 525 (600-1)	1220-2¾ 885 (900-2¾)	1380-3 1045 (1100-3)

