

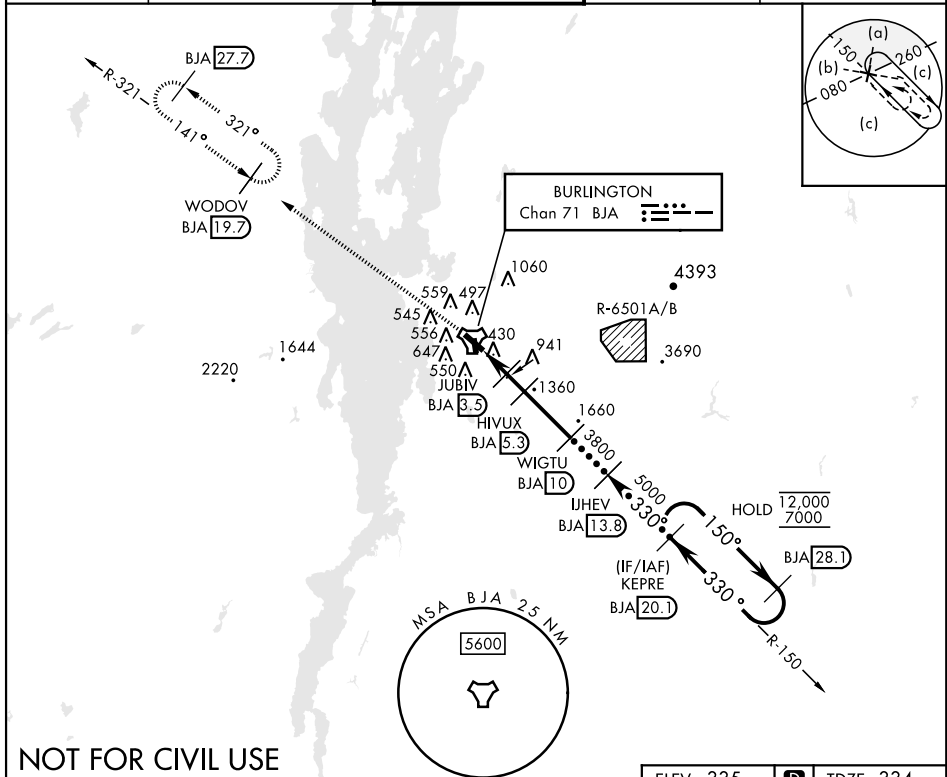


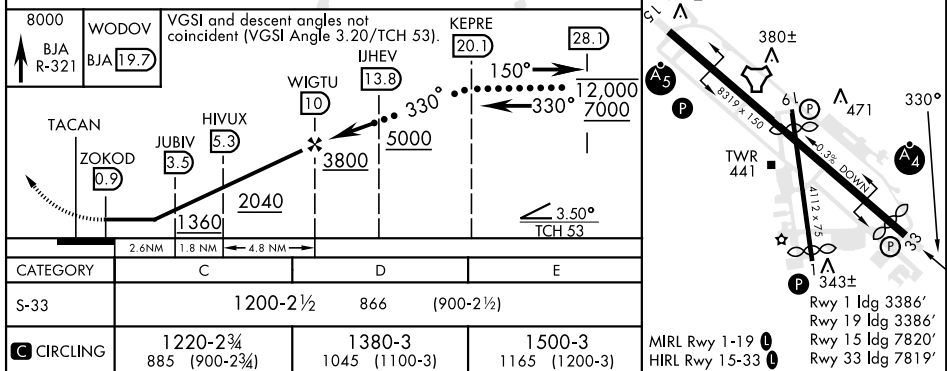
## HI-TACAN RWY 33

TACAN BJA Chan <b>71</b>		APCH CRS <b>330°</b>	Rwy Idg TDZE Arpt Elev <b>7819</b> <b>334</b> <b>335</b>	AL-70 [USAF]      PATRICK LEAHY BURLINGTON INTL (KBTV)	
					MISSED APPROACH: Climb to 8000 on BJA TACAN R-321 to WODOV/BJA 19.7 DME and hold, continue climb-in-hold to 8000.
ATIS <b>123.8 269.9</b>		APP CON <b>121.1 278.8</b>		TOWER ★ <b>118.3 (CTAF) 0257.8</b>	GND CON <b>126.3 348.6</b>
				CLNC DEL <b>119.15</b>	



NOT FOR CIVIL USE

EMERG SAFE ALT 100 NM 8500



BURLINGTON, VERMONT

44°28'N-73°09'W PATRICK LEAHY BURLINGTON INTL (KBTV)

Orig-A 04NOV21

HI-TACAN RWY 33

NE-1, 07 AUG 2025 to 04 SEP 2025