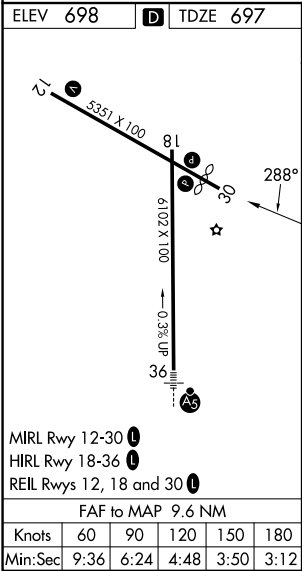
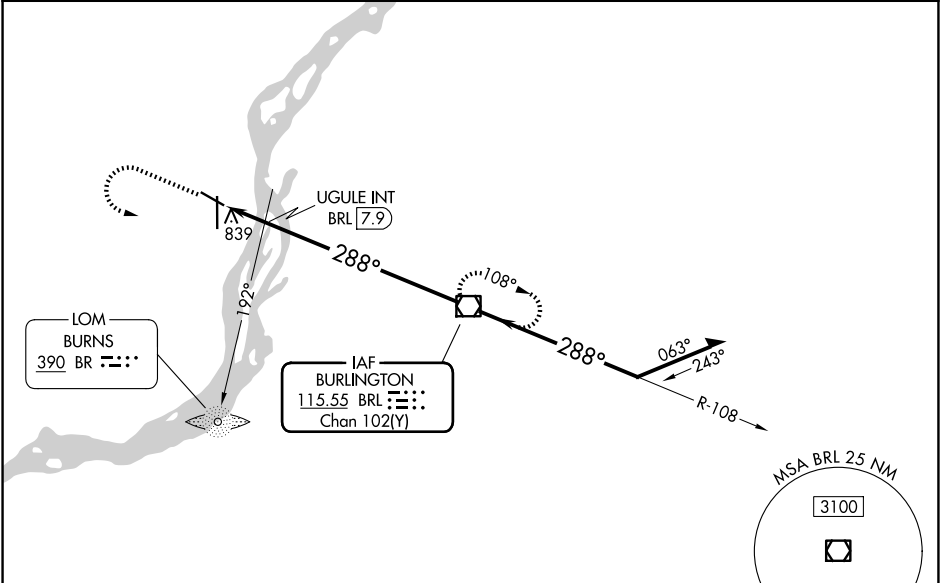


VOR/DME BRL	APP CRS	Rwy Ldg	4850
115.55	288°	TDZE	697
Chan 102(Y)		Apt Elev	698

VOR RWY 30

SOUTHEAST IOWA RGNL (BRL)

<div><div><div></div><div></div></div><div>Rwy 30 helicopter visibility reduction below ¾ SM NA.</div></div>		MISSED APPROACH: Climb to 2000 then climbing left turn to 3000 direct BRL VOR/DME and hold.
ASOS 118.025	CHICAGO CENTER 135.6 370.95	UNICOM 123.0 (CTAF) 0



2000

↑

3000

↖

BRL

◻

UGULE INT

BRL 7.9

BRL 8.5

↙

2.98°

TCH 45°

BRL 9.6

↙

1280

1.2

0.5 NM

7.9 NM

BRL

VOR/DME

108°

288°

3000

Remain within 10 NM

CATEGORY	A		B		C	D
S-30	1280-1	583 (600-1)	1280-1¾ 583 (600-1¾)		NA	
CIRCLING	1280-1	582 (600-1)	1380-2 682 (700-2)		NA	
UGULE FIX MINIMUMS						
S-30	1100-1	403 (500-1)	1100-1⅛ 403 (500-1⅛)		NA	
CIRCLING	1180-1	482 (500-1)	1380-2 682 (700-2)		NA	

NC-3, 07 AUG 2025 to 04 SEP 2025

NC-3, 07 AUG 2025 to 04 SEP 2025