

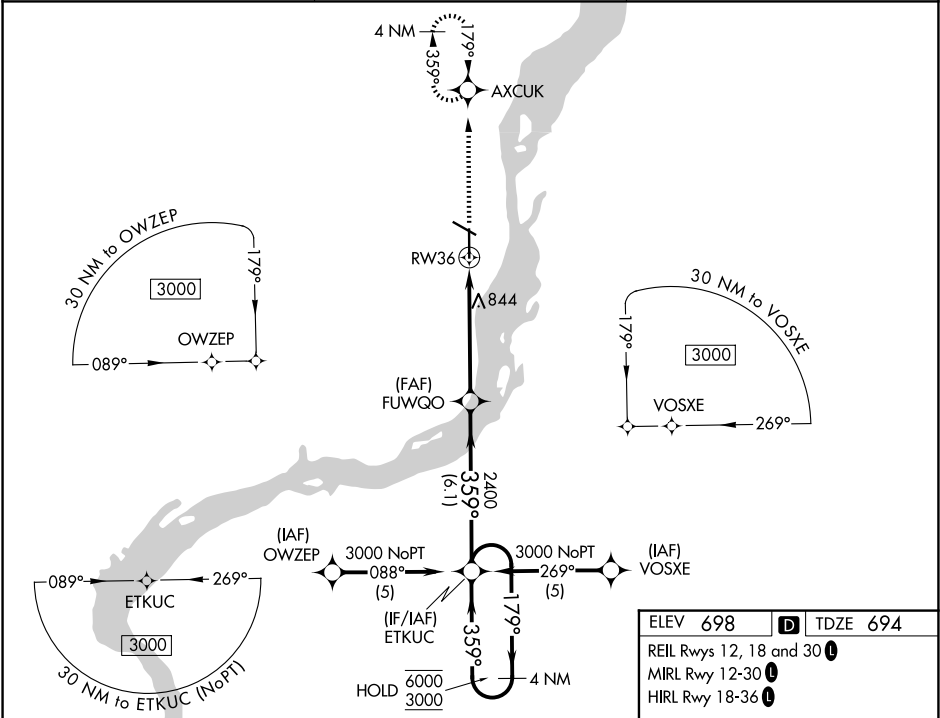
WAAS CH 42711 W36A	APP CRS 359°	Rwy Ldg TDZE 694 Apt Elev 698
--	------------------------	---

RNAV (GPS) RWY 36

SOUTHEAST IOWA RGNL (BRL)

RNP APCH.	MALSR	MISSED APPROACH: Climb to 3000 direct AXCUC and hold, continue climb-in-hold to 3000.
<div><div></div><div>For uncompensated Baro-VNAV systems, LNAV/VNAV NA below -16°C or above 54°C.</div></div>	<div><div></div></div>	

ASOS 118.025	CHICAGO CENTER 135.6 370.95	UNICOM 123.0 (CTAF)
------------------------	---------------------------------------	-------------------------------



4 NM Holding Pattern		ETKUC	FUVWQO	3000	AXCUC
6000 ← 179°		359° →	359°	2400	*1.2 NM to RWY36
GP 3.00° TCH 54					*LNAV only.
		6.1 NM	4 NM	1.2 NM	
CATEGORY	A	B	C	D	
LPV DA		894-½	200 (200-½)	NA	
LNAV/VNAV DA		1026-¾	332 (400-¾)	NA	
LNAV MDA	1100-½	406 (500-½)	1100-¾ 406 (500-¾)	NA	
CIRCLING	1180-1	482 (500-1)	1380-2 682 (700-2)	NA	