

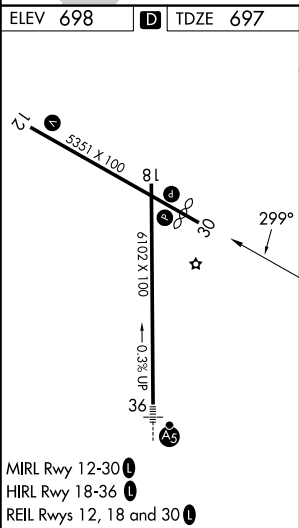
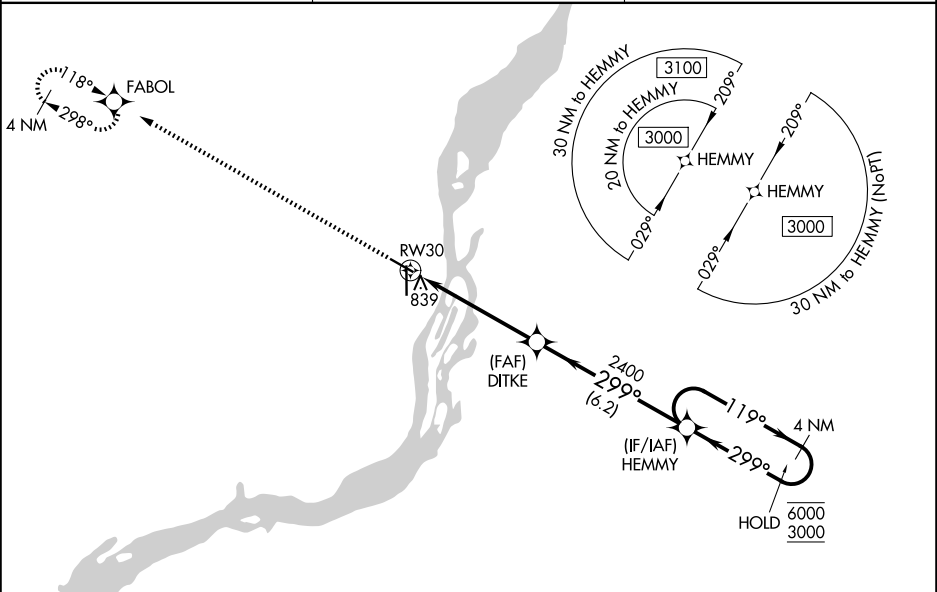
WAAS CH 45535 W30A	APP CRS 299°	Rwy Ldg TDZE 697 Apt Elev 698
--	------------------------	---

RNAV (GPS) RWY 30

SOUTHEAST IOWA RGNL (B.R.L.)

RNP APCH.	MISSED APPROACH: Climb to 3000 direct FABOL and hold.
<div><div></div><div>Rwy 30 helicopter visibility reduction below $\frac{3}{4}$ SM NA. For uncompensated Baro-VNAV systems, procedure NA below -21°C or above 54°C.</div></div>	

ASOS 118.025	CHICAGO CENTER 135.6 370.95	UNICOM 123.0 (CTAF) 
------------------------	---------------------------------------	---



3000	FABOL	VGSIs and descent angles not coincident (VGSi Angle 3.00/TCH 30).			
*LNAV only		DITKE	HEMMY	4 NM Holding Pattern	
*1.2 NM to RWY 30		2400	299°	119°	6000 3000
RWY 30		2400	299°	299°	GP 3.00° TCH 40
1.2		4 NM	6.2 NM		
CATEGORY	A	B	C	D	
LPV DA	995-1 298 (300-1)				NA
LNAV/VNAV DA	989-1 292 (300-1)				NA
LNAV MDA	1100-1	403 (500-1)	1100-1 $\frac{1}{8}$ 403 (500-1 $\frac{1}{8}$)	NA	
CIRCLING	1180-1	482 (500-1)	1380-2 682 (800-2)	NA	

NC-3, 07 AUG 2025 to 04 SEP 2025

NC-3, 07 AUG 2025 to 04 SEP 2025