

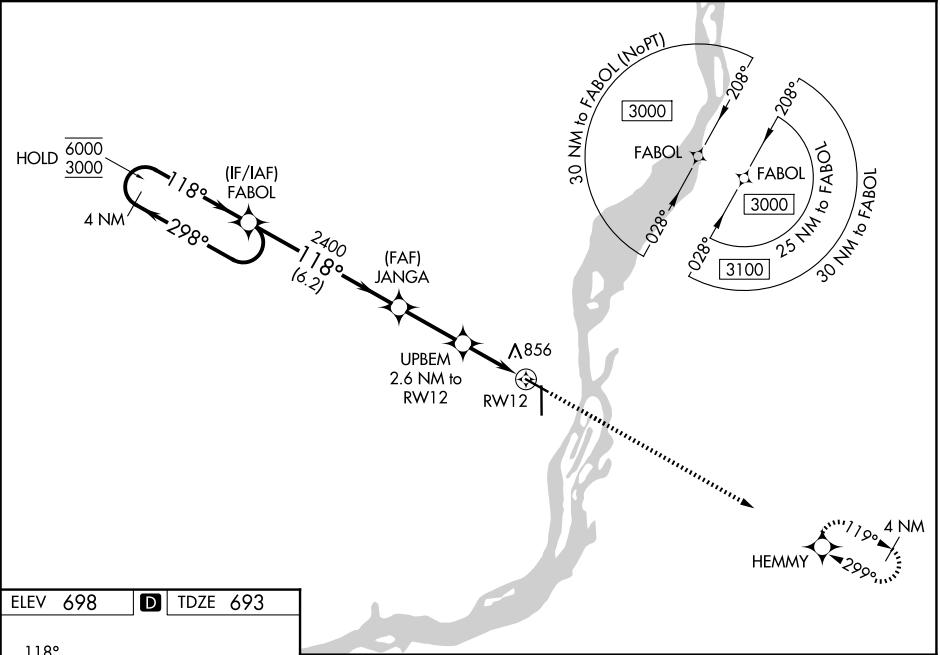
WAAS CH 48834 W12A	APP CRS 118°	Rwy Ldg TDZE 693 Apt Elev 698
--	------------------------	---

RNAV (GPS) RWY 12

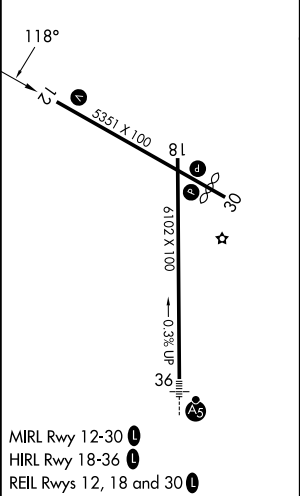
SOUTHEAST IOWA RGNL (BRL)

RNP APCH.	MISSED APPROACH: Climb to 3000 direct HEMMY and hold.
<div><div></div><div>For uncompensated Baro-VNAV systems, procedure NA below -21°C or above 54°C.</div></div>	

ASOS 118.025	CHICAGO CENTER 135.6 370.95	UNICOM 123.0 (CTAF) 0
------------------------	---------------------------------------	---------------------------------



ELEV 698	D	TDZE 693
----------	----------	----------



4 NM Holding Pattern				FABOL	JANGA	UPBEM 2.6 NM to RW12	3000 ↑ *LNAV only	HEMMY ✦
6000	← 298°		118° →		118°	2400	*1.2 NM to RW12	
3000						*1540	RW12	
GP 3.00°					6.2 NM	2.6 NM	1.4	1.2
TCH 39								
CATEGORY	A	B	C	D				
LPV DA	943-1 250 (300-1)				NA			
LNAV/VNAV DA	1017-1½ 324 (400-1½)				NA			
LNAV MDA	1120-1 427 (500-1)		1120-1¼ 427 (500-1¼)		NA			
CIRCLING	1180-1 482 (500-1)		1380-2 682 (700-2)		NA			